



“A Digital Solution to address your mining business challenge”



**- SMCS Smart Mining -
Production, Inventory, Sales, Carbon Footprints**



Edit Master text styles

- 1 About Us**
PT. Adiraja Integrasi
- 2 Selected Portfolios**
Supply Chain Management
- 3 SMCS Smart Mining**
Functionalities coverage
- 4 SMCS Command Centre**
Dashboard Function
- 5 Study Case**
Challenges & Goal



Brief Introduction

Company



- More than a decade experiences in Mining Supply Chain Projects
- Big mining clients in local & overseas
- Focused on Enterprise Software Development with continuous development



Product & Services



Enterprise Resource Planning

ODOO ERP

Human Resource Information Management

ODOO HRIS | eBS HRIS

Enterprise Performance Management

MAXIBU Financial Planning & Budgeting
MAXICO Financial Consolidation

Mining Supply Chain Management

SMCS Production Logistics
SMCS Sales Marketing
SMCS Carbon Footprints

odoo

maxibu Planning & Budgeting maxico Financial Consolidation

smcs Production Logistics smcs Sales Marketing smcs Command Center

Our Mining Industry Clients



**PT. UNGGUL
DINAMIKA
UTAMA**



**Overseas
Clients**



Edit Master text styles

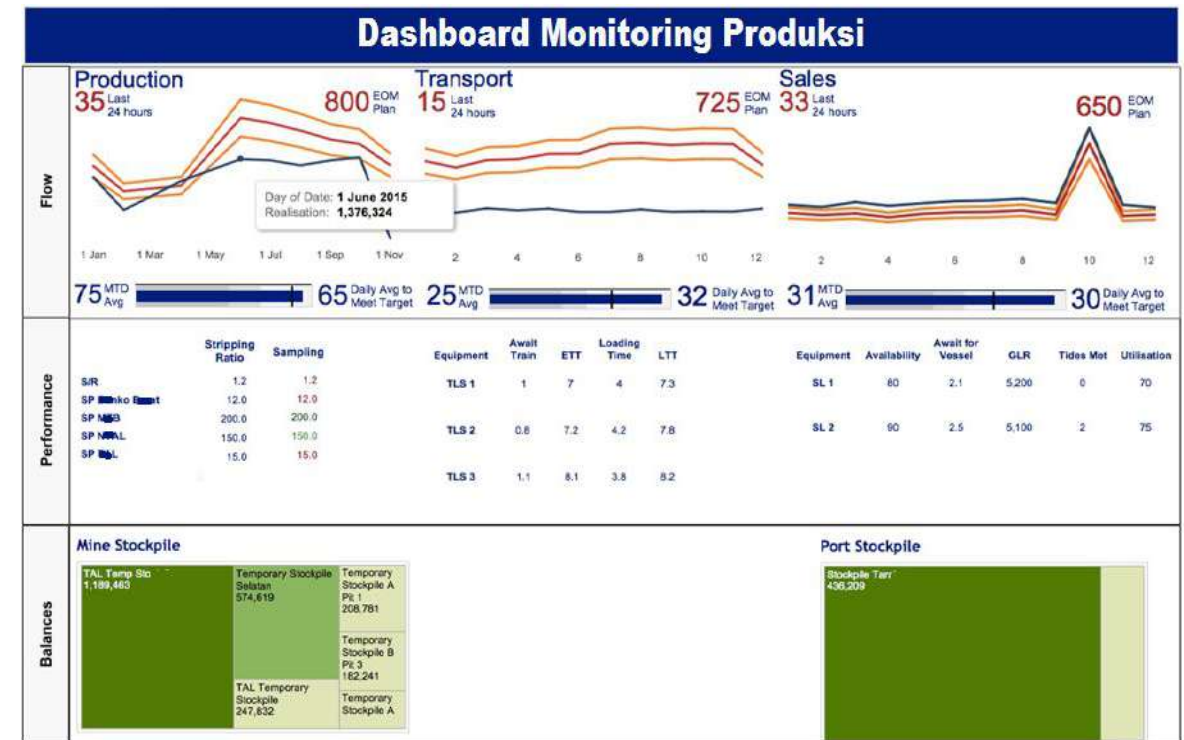
- 1 About Us**
PT. Adiraja Integrasi
-  **2 Selected Portfolios**
Supply Chain Management
- 3 SMCS Smart Mining**
Functionalities coverage
- 4 SMCS Command Centre**
Dashboard Function
- 5 Study Case**
Challenges & Goal

Selected Portfolios

Supply Chain Management

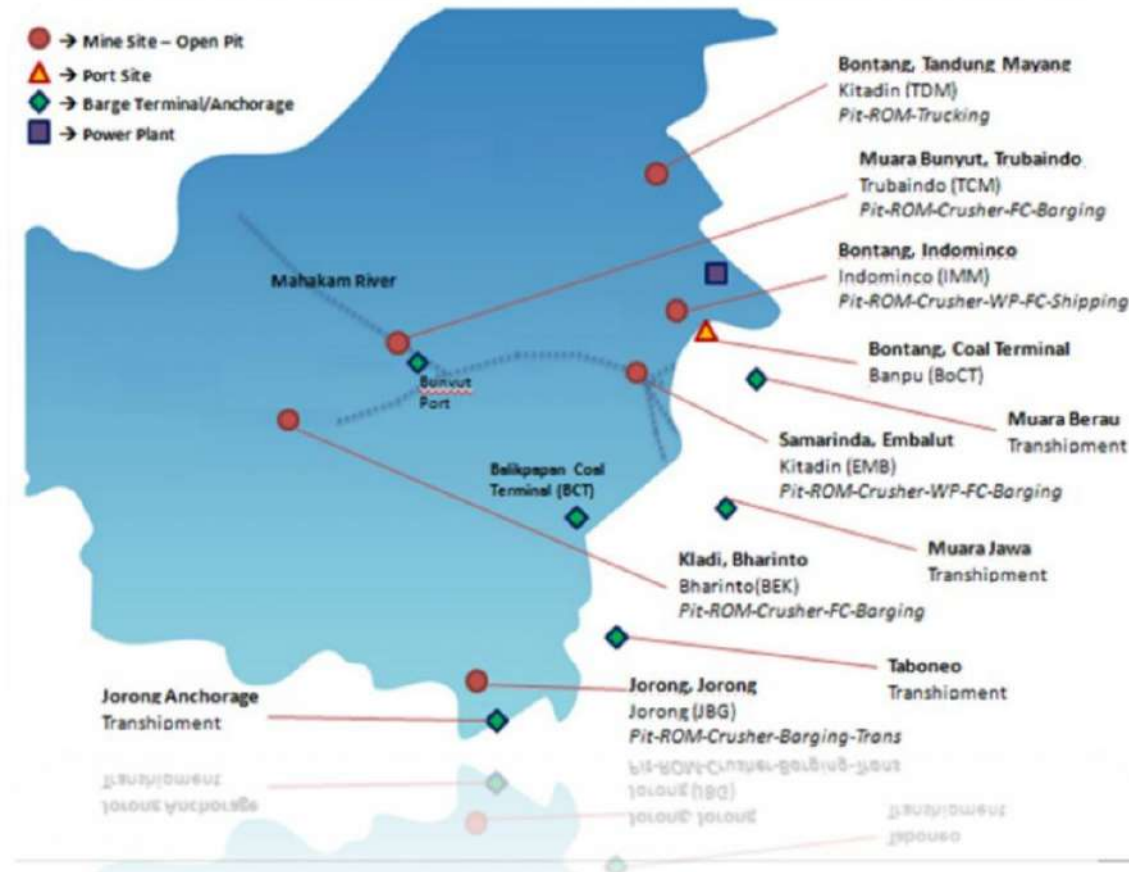
Selected Portfolio #1

PT. Bukit Asam – Supply Chain Management System



“Increased visibility of end-to-end coal supply chain from pit, processing plant, rail transportation, port, to vessel. The whole system provides us with interactive management dashboard and also supply & demand optimization”

A Case Study – Banpu Group



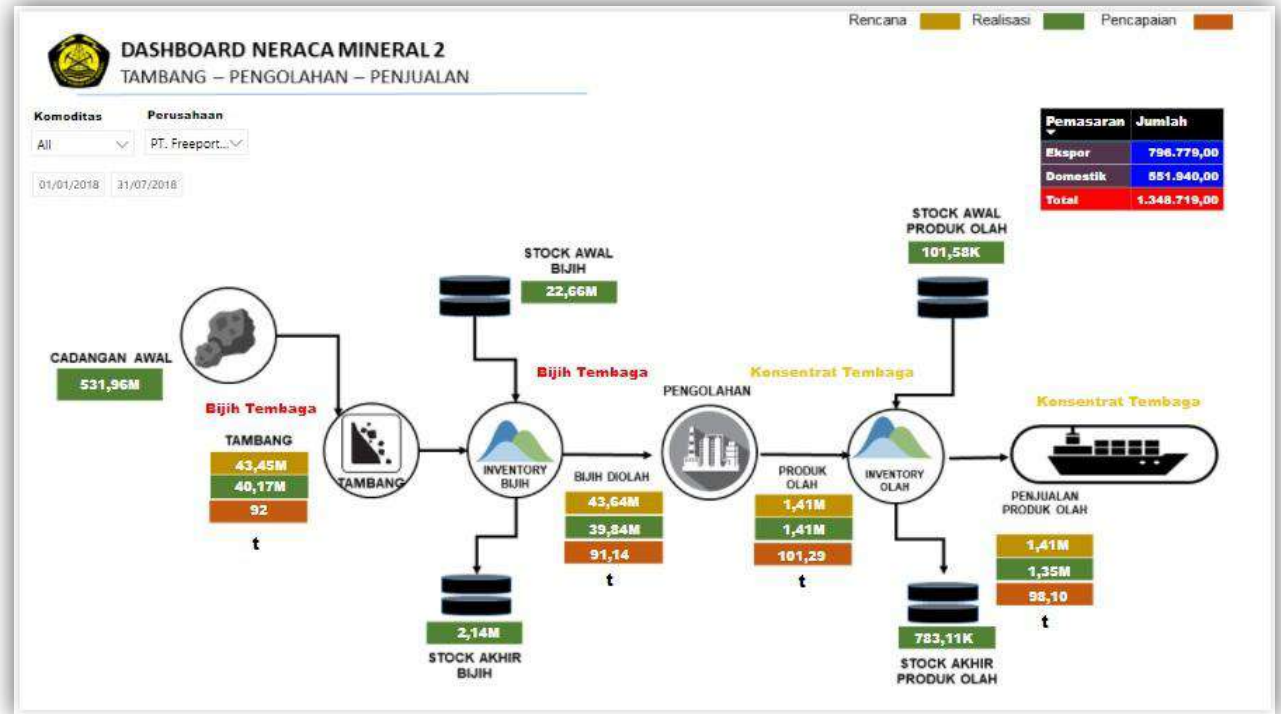
Operations

- Indo Tambangraya Megah, Tbk
- Indominco Mandiri
- Bharinto Ekatama
- Jorong Baratama Greston
- Kitadin
- Trubaindo Coal Mining
- BMS Coal Sales
- Banpu International Limited

Solutions

- Coal Procurement
- Production
- Logistics, Hauling & Inventory
- Quality
- Transportation
- Inbound & Outbound Logistics
- Sales Operation
- Contract Marketing

Kementerian ESDM – Minerba Online Monitoring System (MOMS)



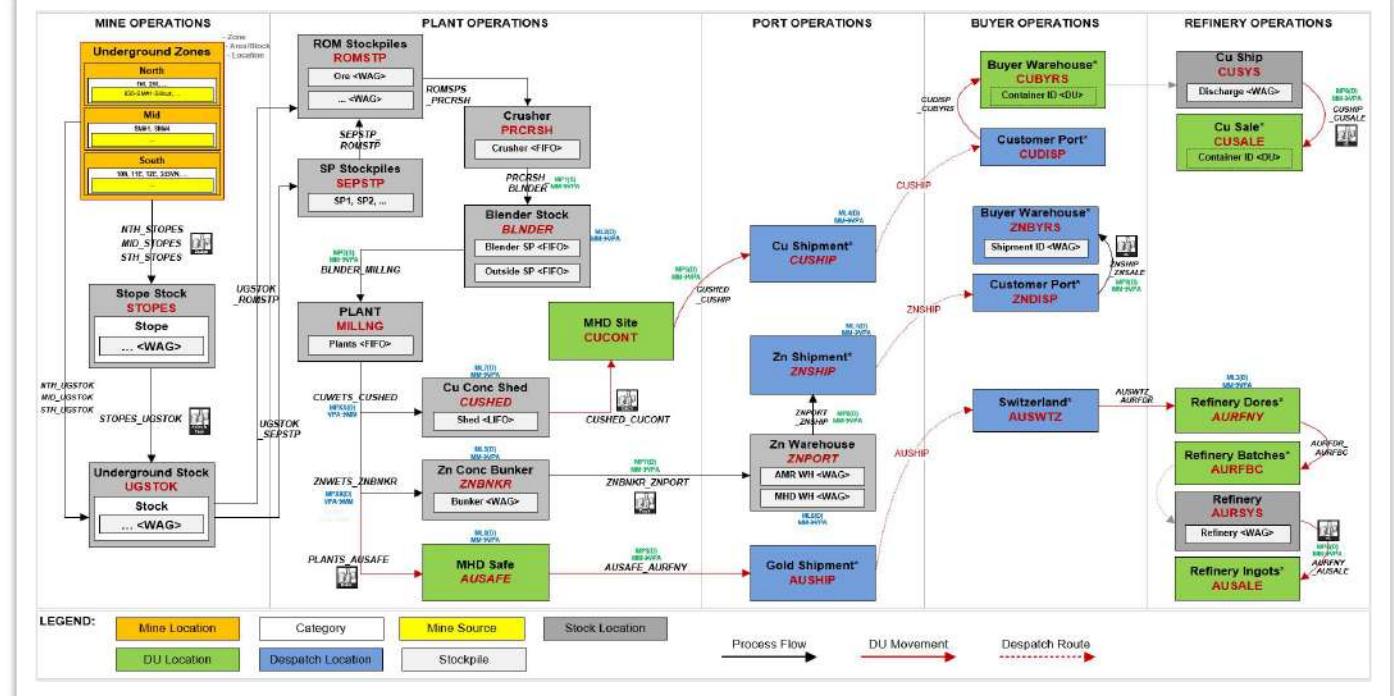
“Sistem online di pertambangan mendongkrak kas negara” –
Archandra Tahar via CNBC Indonesia

Minerba Online Monitoring System (MOMS)

Production, Processing, Refinery, & Sales

Selected Portfolio #4

Ma'aden Gold & Base Metals – Intelligent Mining Solution

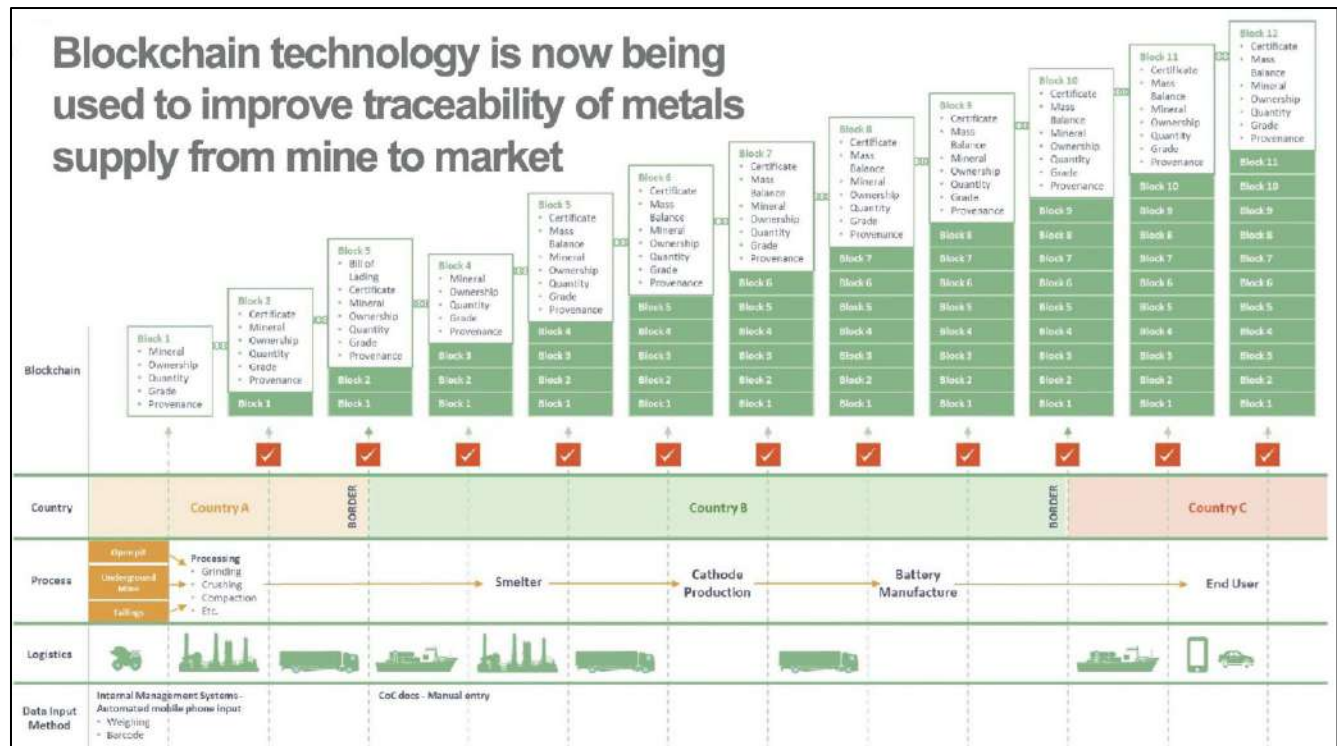


Achievement:

- Consolidation all Saudi Arabia operations: Jeddah, Riyadh, Medinah.
- End to end operation integration between production & accounting.
- Mining reconciliation within reliable & traceable system.

Selected Portfolio #5

Hydrotech Metal Indonesia – Carbon Footprints Design



Goals:

- LCA for Mining - Carbon Footprints
- Smelter Certificate for Exported Product

Edit Master text styles

- 1 About Us**
PT. Adiraja Integrasi
- 2 Selected Portfolios**
Supply Chain Management
-  **3 SMCS Smart Mining**
Functionalities coverage
- 4 SMCS Command Centre**
Dashboard Function
- 5 Study Case**
Challenges & Goal

SMCS Smart Mining

Functionalities Coverage

Product Historical Roadmap

2010 **first development of mining supply chain project**

the system development is built based on one of the big mining companies

2012 **enhancement for sales marketing process**

additional modules for sales marketing to cope with complex pricing & administration

2016 **modelling network supply chain object**

end-to-end process flow connection all supply chain objects

2020 **major development with latest technology**

Redesign & redevelopment with new platform supporting SaaS technology with total solution covering whole functions



**Future
Development**

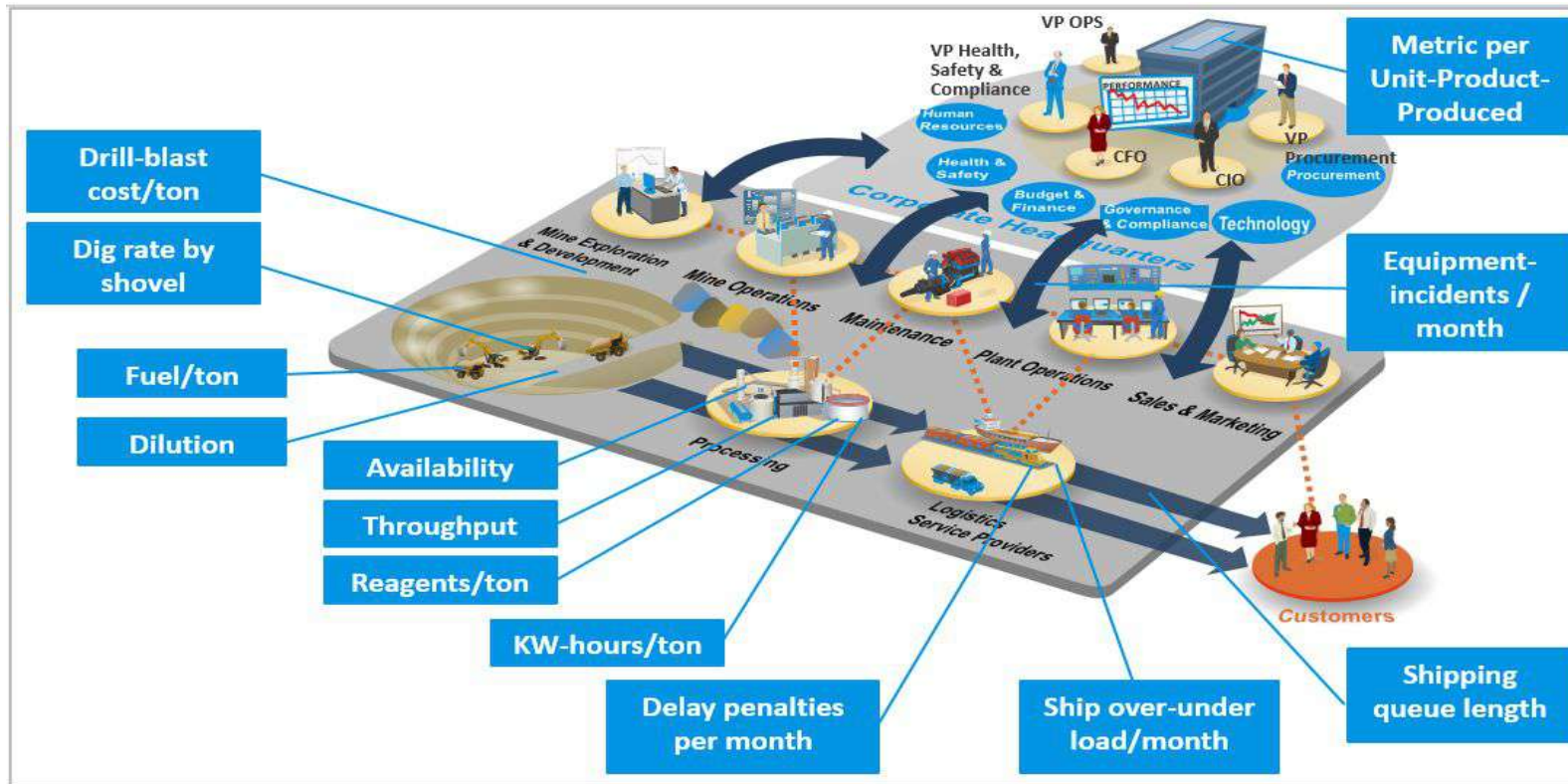
Carbon Footprints

**Process Feature
Enhancement**

**User Interface
Enhancement**



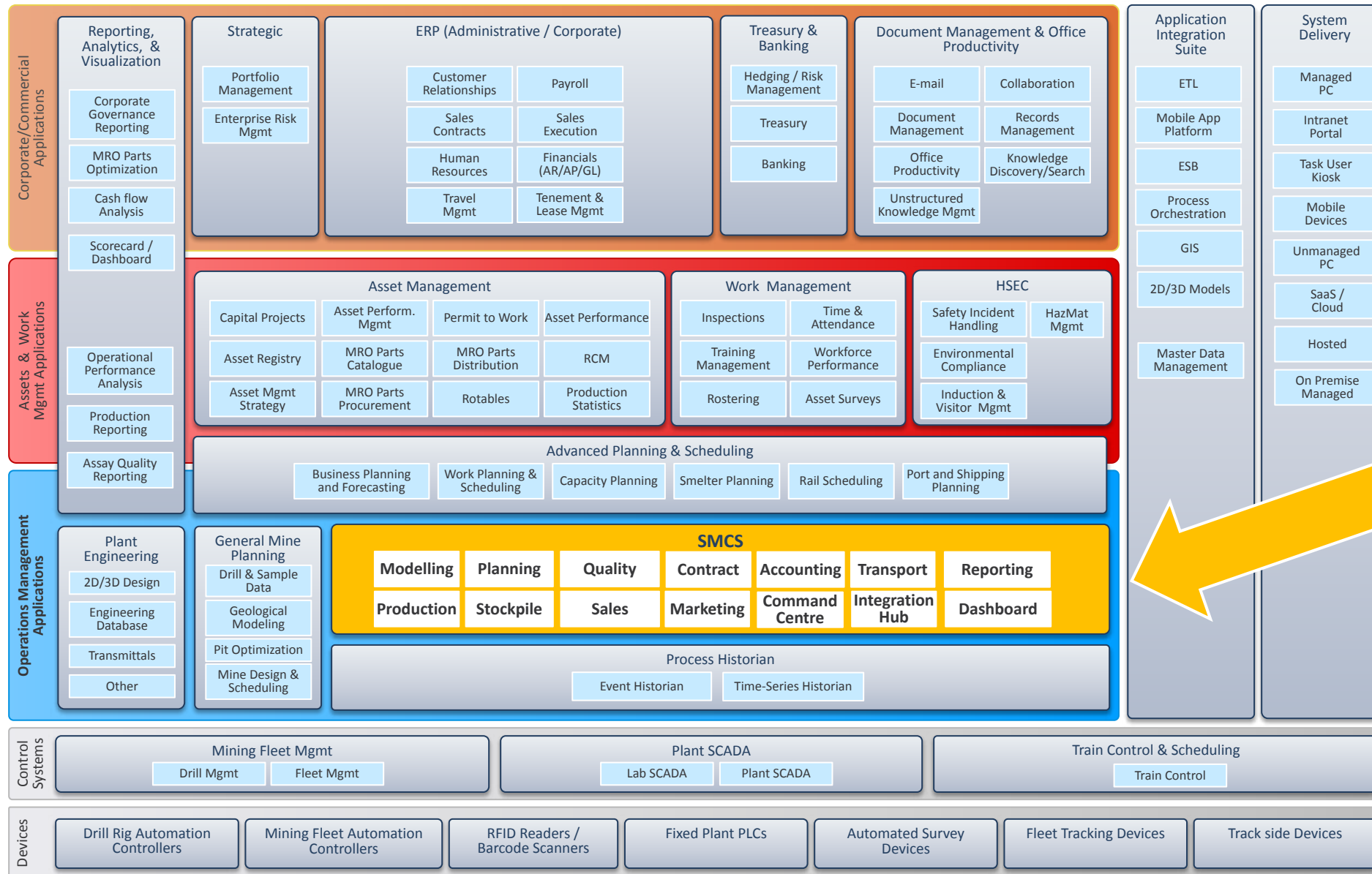
SMCS Program Goal



- ✓ **Single version of the truth & Common information** across departments. High data integrity for **reconciliation** or **traceability** for both quantity & quality

- ✓ **End to end visibility** for daily supply chain planning. Balancing production, supply, & sales
- ✓ Enforcing **best practice** in operation administration in the long-run. Eliminating people dependency, reducing human error
- ✓ **Reliable integration** to operations system to minimize manual data input.
- ✓ **Carbon Footprints** to calculate the product life-cycle process generating carbon emissions

Mining Industry Reference & SMCS Position



Corporate

Asset &
Work
Management

Operation
Management

Control
System

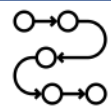
Devices

SMCS All Modules



Modelling Management

- Operation Area
- Mine Pit
- Stockpiles
- Port Location
- Flow Process



Planning Management

- Production Plan
- Sales Plan
- Blending Plan
- Shipment Plan



Quality & Material

- Material
- Product & Spec
- Analyte & Template
- Assay Result
- Certificate of Analysis



Contract Management

- Advanced Contract for Services
- Complex Formulation
- Sales Contract



Accounting Management

- COA
- Operation COA Mapping
- Sales Invoice



Production

- Hauling
- Re-handling
- Loading Unloading
- Transport
- Equipment Timesheet



Stockpile

- Incoming Outgoing
- Stock Survey
- Stockpile State



Sales

- Barging
- Shipment
- Shipping Documents
- Despatch Demurrage



Integration Hub

- Operation Area
- Mine Pit
- Stockpiles
- Flow for Hauling



Command Center

- Production & Sales Board
- Fleet Management
- Long Hauling Monitoring
- Shipment Monitoring



SMCS Production Logistics

Modelling

- ✓ Operation Area
- ✓ Mine Pit
- ✓ Stockpiles
- ✓ Port Location
- ✓ Flow Process

Planning

- ✓ Production Plan
- ✓ Blending Plan
- ✓ Shipment Plan

Quality & Material

- ✓ Material
- ✓ Product Spec
- ✓ Analyte & Template
- ✓ Assay Result

Production

- ✓ Operation Area
- ✓ Mine Pit
- ✓ Stockpiles
- ✓ Port Location
- ✓ Flow Process

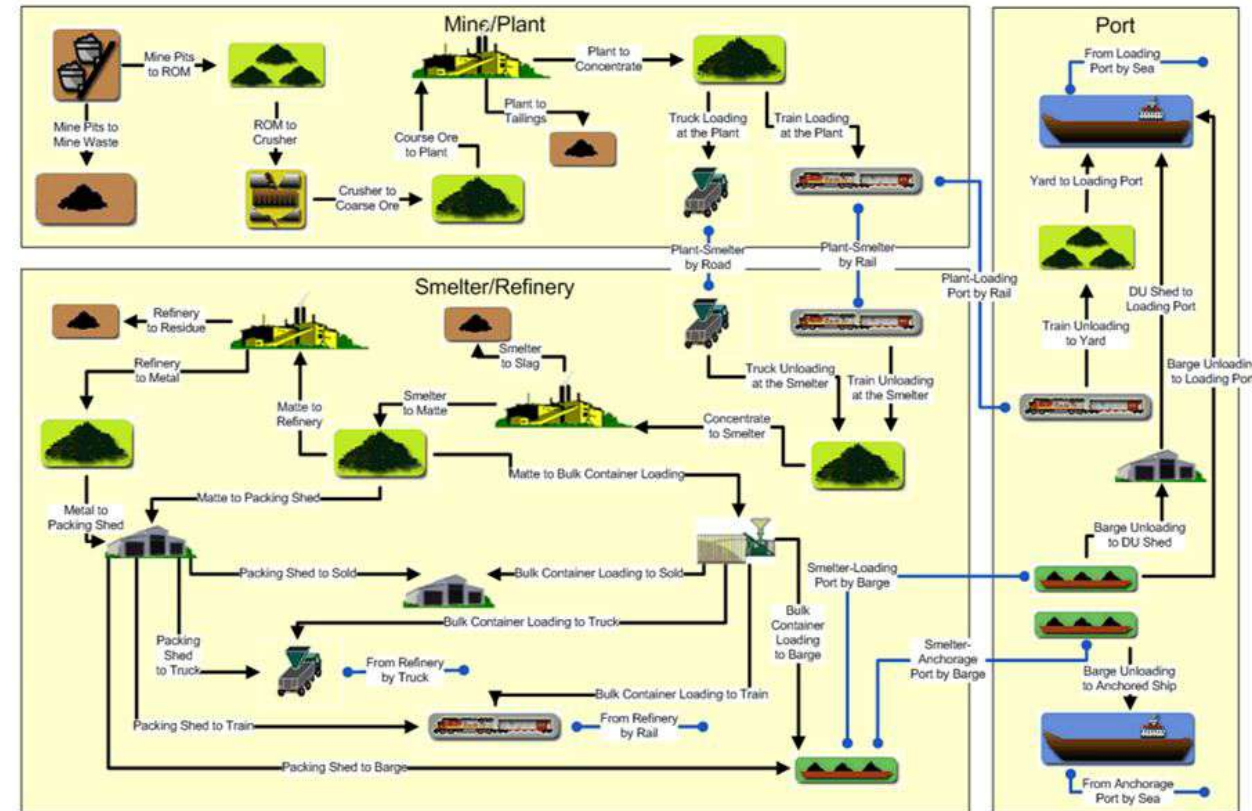
Stockpile

- ✓ Production Plan
- ✓ Sales Plan
- ✓ Blending Plan
- ✓ Shipment Plan

Sales

- ✓ Analyte & Template
- ✓ Assay Result

“a pit to port control”

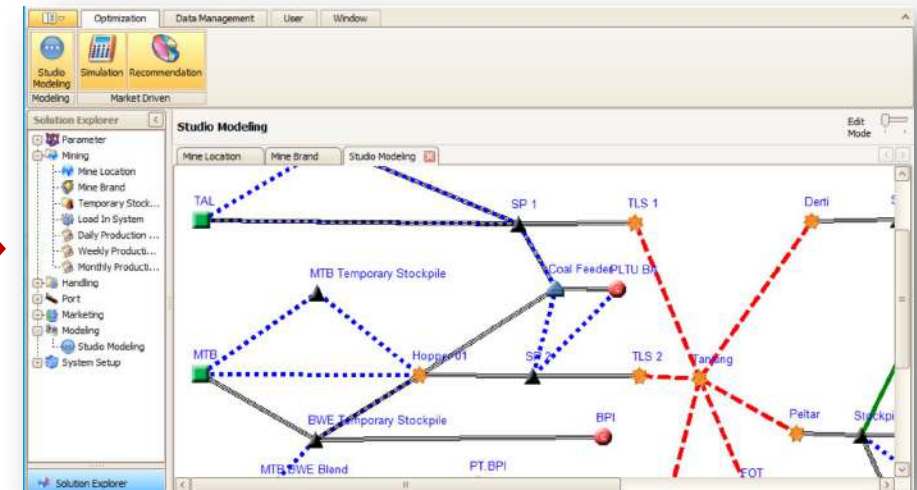
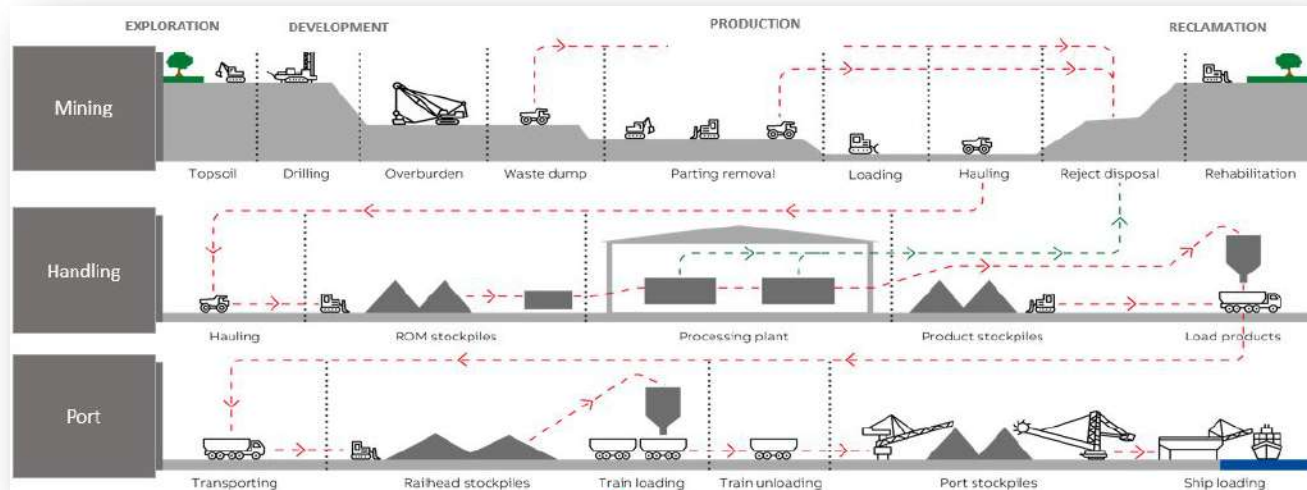


Modelling Management

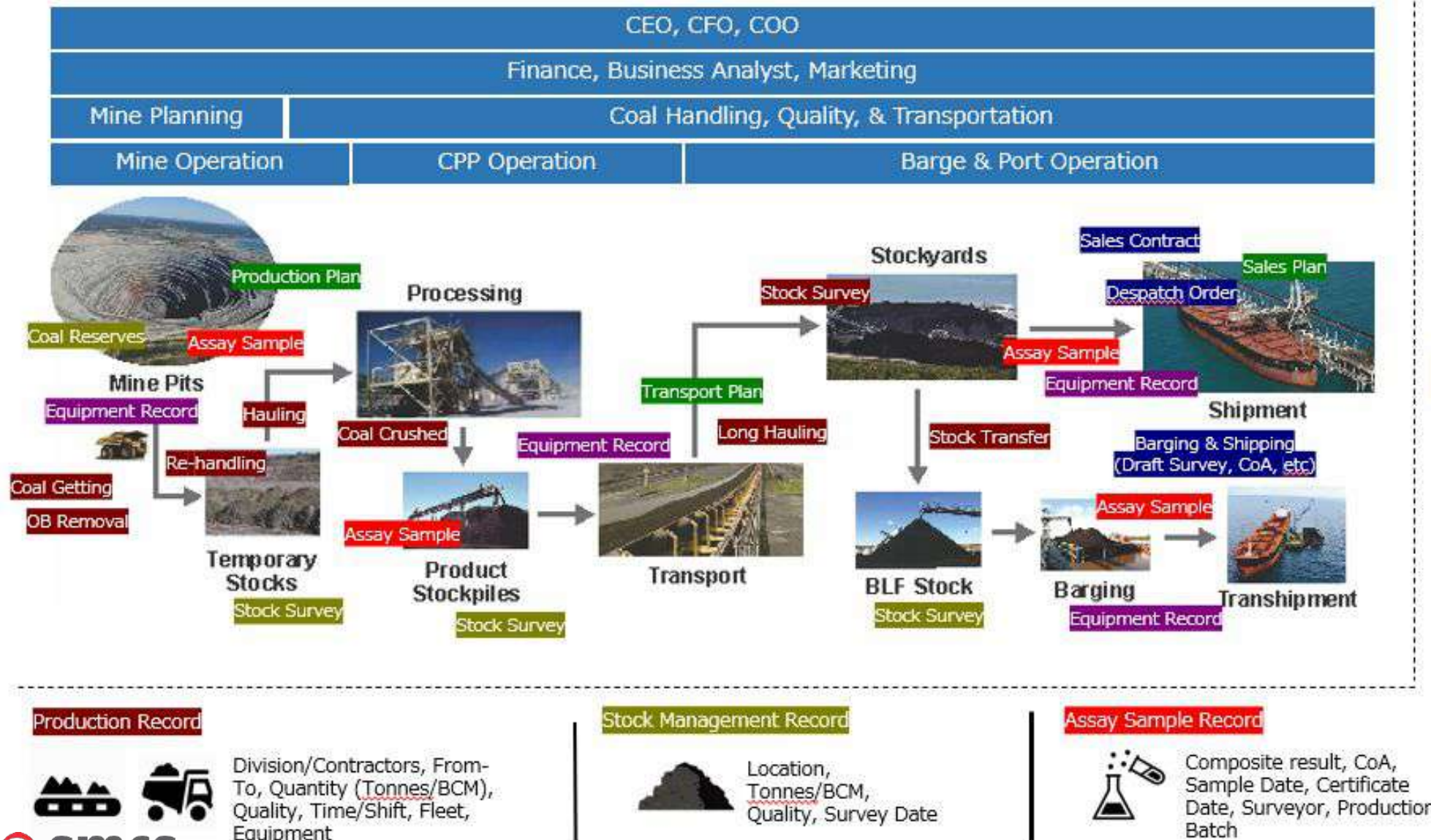
- Modelling end-to-end mining operation
- Mining area from mine pit to CPP
- Processing Area from crushing to product stockpile
- Port Area from stockyard to shipping

– **MODELLING** – PLANNING – QUALITY – CONTRACT – ACCOUNTING

– PRODUCTION – STOCKPILE – SALES MARKETING – IHUB – COMMAND CENTRE



Production Management



Executive Management
Dashboard, Reporting, & KPI

ERP/EAM

SMCS

Uploader/User Entry/
Integration

Devices
System

Control
System

Historian

Fleet Management, Truck scale,
RFID, Rail Transport, Vessel
GPS, SCADA, etc

Stockpile Management

Production & Logisti... / Stockpile Manag... / Stockpile Mutati... Monday, February 20, 2023

From: 02 Feb 2020 00:00 To: 20 Feb 2023 00:00 Debit/Credit Note

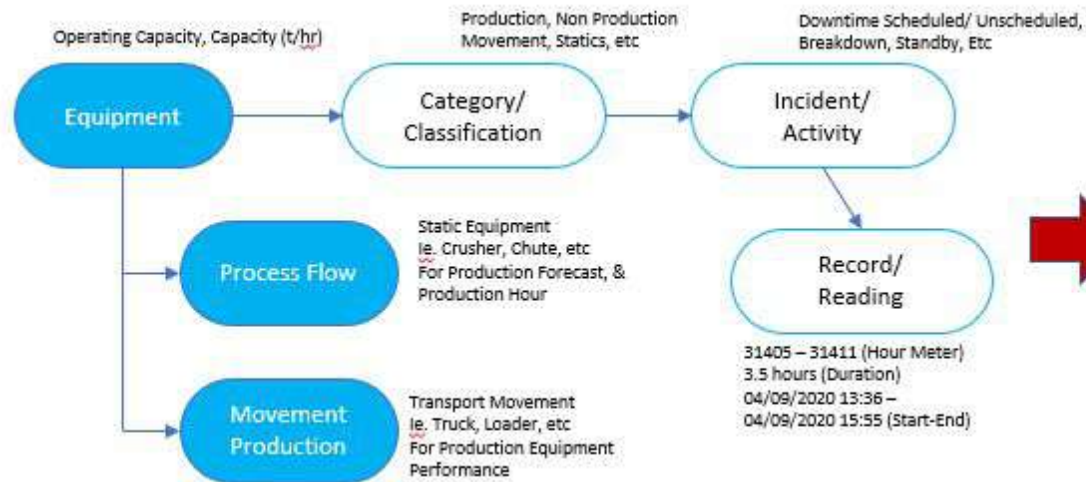
Stockpile Mutation Actions

Location ↑ ↓ Search...

Stockpile	Entity	Transaction Dat...	Opening	In	Out	Survey	Closing
Q	Q	Q	Q	Q	Q	Q	Q
▶ Location: CPP KM 25 HOPPER > HOPPER							
▼ Location: CPP KM 25 PRODUCT > STOCK PRODUCT (Continues on the next page)							
▶ STOCK PRODUCT	rehandling_transaction	2023-02-14 06:59	21,319.15	415.80	0.00	0.00	21,734.95
▶ STOCK PRODUCT	rehandling_transaction	2023-02-14 06:59	21,226.75	92.40	0.00	0.00	21,319.15
▶ STOCK PRODUCT	rehandling_transaction	2023-02-14 06:59	21,111.25	115.50	0.00	0.00	21,226.75
▶ STOCK PRODUCT	hauling_transaction	2023-02-14 06:42	21,149.75	0.00	38.50	0.00	21,111.25
▶ STOCK PRODUCT	hauling_transaction	2023-02-14 05:45	21,187.65	0.00	37.90	0.00	21,149.75
▶ STOCK PRODUCT	hauling_transaction	2023-02-14 04:06	21,226.20	0.00	38.55	0.00	21,187.65
▶ STOCK PRODUCT	hauling_transaction	2023-02-14 03:59	21,262.75	0.00	36.55	0.00	21,226.20
▶ STOCK PRODUCT	hauling_transaction	2023-02-14 03:58	21,299.25	0.00	36.50	0.00	21,262.75

Inbound, outbound, survey (month-end, ad-hoc), & quality adjustment

Production – Equipment Timesheet



SmartMining

Search for anything

Production & Logistics / Mining / Production

Saturday, February 18, 2023

Delay & Event

Drag a column header here to group by that column

Date	Business A...	Equipment...	Equipment	Created by	Shift	Duration	Remark
10/1/2022	INDO COAL >...	CONVEYOR	RBSEX-001 - ...	Administrator ...	(All)	16.000	

Details

Drag a column header here to group by that column

Start Date	End Date	Type	Problem Re...	Delay Infor...	Duration	Remark	Location
2022-10-01 00...	2022-10-01 13...	Jetty Operation			13.000		(All)
2022-10-01 04...	2022-10-01 14...	Breakdown			3.000		

Create Filter

Page 1 of 1 (2 items)

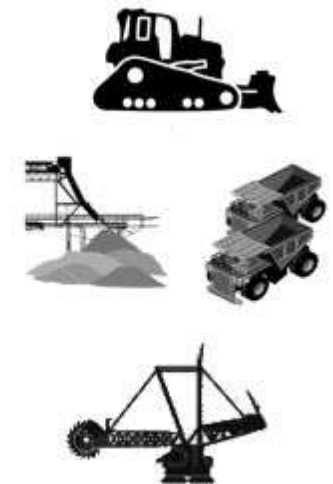
PLANNING	Scheduled Production Time	
AVAILABILITY (B / A)	A	Available time
	B	Production time Start up, Charges, Failure, Waiting
PERFORMANCE (D / C)	C	Production capacity
	D	Actual Production Micro-stop, reduced speed
OEE		

Equipment

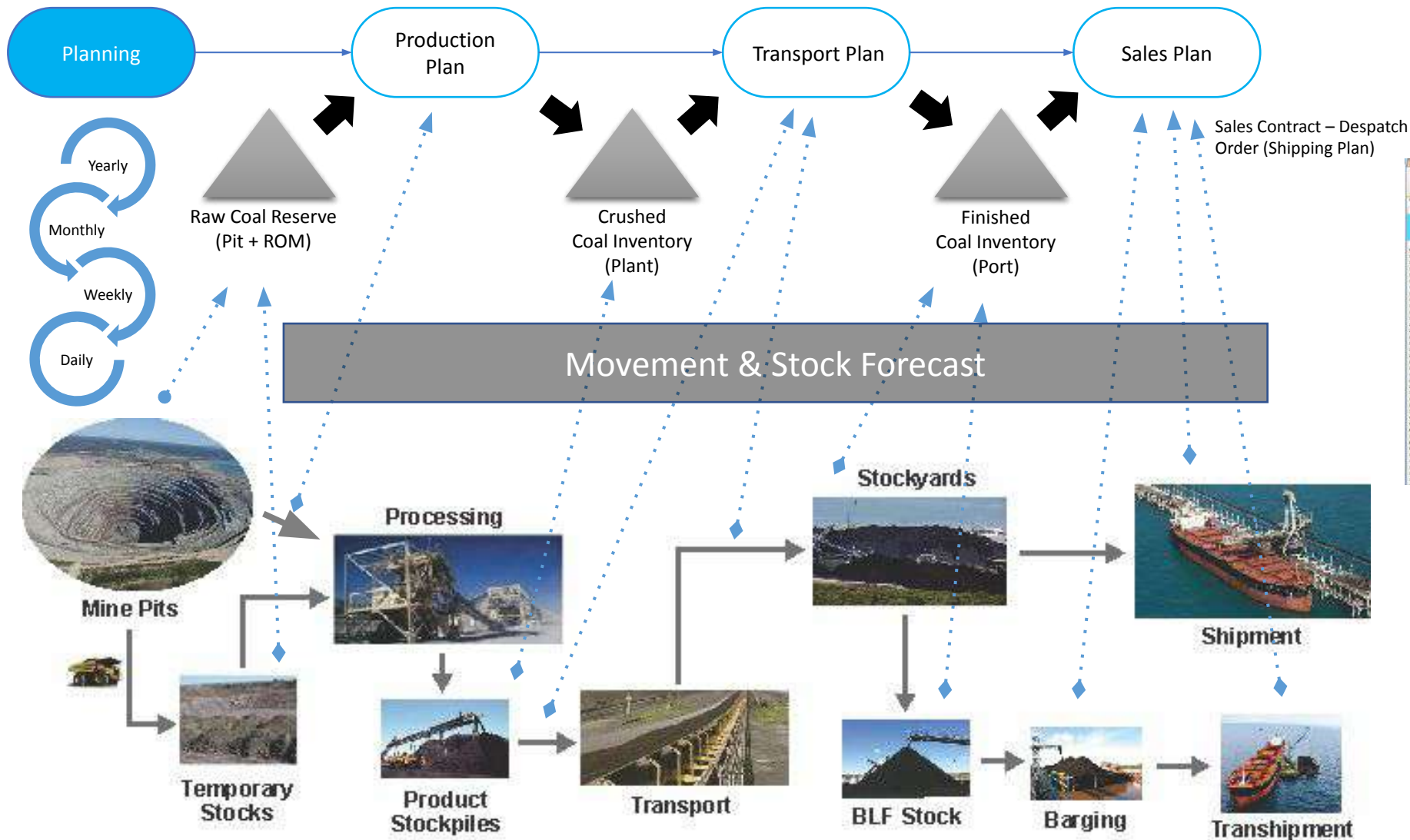
- Equipment Categories
 - Indonesian Operations
 - IMM
 - CFB
 - EXCAVATOR
 - PAMA
 - TRUST
 - PC1250-TRS20
 - PC1250-TRS21
 - PC1250-TRS22
 - PC1250-TRS24
 - PC1250-TRS25
 - PC300-MJEX103
 - PC300-MJEX105
 - PC300-MJEX118
 - IPCC
 - TDM

Incident Categories

- TDM
 - BoCT
 - C-50
 - CBU
 - Breakdown CBU
 - CBU - Bucket Elevator Fault
 - CBU - Cable Reel Fault
 - CBU - Communication Fault
 - CBU - Hoist Winch Fault
 - CBU - Lubrication System For
 - CBU - LV Earth Fault / Tribo
 - CBU - Other
 - CBU - Rail Clamp Fault
 - CBU - Trolley Fault
 - Breakdown Conveyor
 - Breakdown_Other_CBU
 - Delay Marine
 - Delay Operation
 - Delay Other
 - Delay RNT I/Contractor



Planning Management



The screenshot shows a detailed spreadsheet interface for planning. The columns are labeled: "Contract Coal", "Port Stock", "Train", "Crush Coal", and "ROM". The rows represent different planning periods, likely monthly or quarterly, with various data points and formulas visible in the cells. The interface includes a header section with tabs for "Port Blending", "Train", "Crush", and "Mining".

- ✓ Centralized Worksheet Planning
- ✓ Top-down & bottom-up adjustment
- ✓ Formula logic feature (day-off, seasonal condition, etc)
- ✓ No-stock warning

Blending Plan

SmartMining

Search for anything

Production & Logisti... / Planning / Blending

From: 01 Jan 2023 00:00 To: 18 Feb 2023 00:00 OK

Blending

Drag a column header here to group by that column

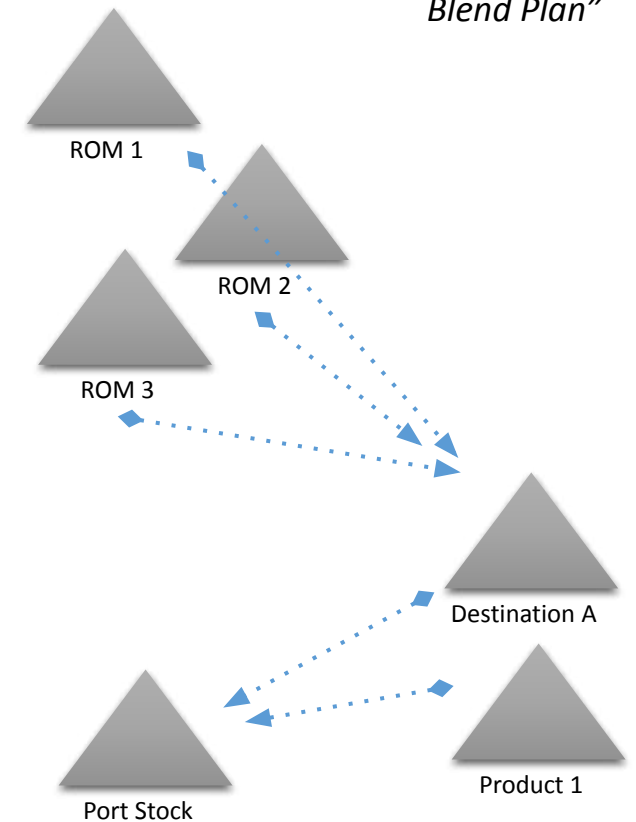
	T...	Ca...	Product	Pla...	De...	De...	Volume	TM	IM	AC	VM	FC	TS	CV ...	CV ...
	Q	(...)	(All)	Q	(...)	(...)	Q	Q	Q	Q	Q	Q	Q	Q	Q
▶	IKH-B...	IKH Port	Indo Product Coal	2/2/2...		CPP ...	25,500.000	36.290	21.159	5.899	40.203	33.760	0.711	4,947	3,997
▶	IKH-B...	IKH Port	Indo Product Coal	2/2/2...		CPP ...	26,750.000	30.674	17.574	188.126	33.995	28.687	0.545	4,183	3,360
▶	IKH-B...	IKH Port	Indo Product Coal	2/3/2...		CPP ...	33,750.000	30.651	17.457	150.036	33.163	28.477	0.649	4,116	3,288
▶	IKH-B...	IKH Port	Indo Product Coal	2/4/2...		CPP ...	33,250.000	31.459	17.877	152.139	33.610	28.989	0.577	4,177	3,322
▶	IKH-B...	IKH Port	Indo Product Coal	2/4/2...		CPP ...	33,500.000	30.393	17.543	150.928	32.570	28.239	0.542	4,071	3,262
✓	IKH-B...	IKH Port	Indo Product Coal	2/5/2...		CPP ...	31,500.000	32.847	18.679	222.869	35.102	30.276	0.613	4,371	3,480

Sources

Drag a column header here to group by that column

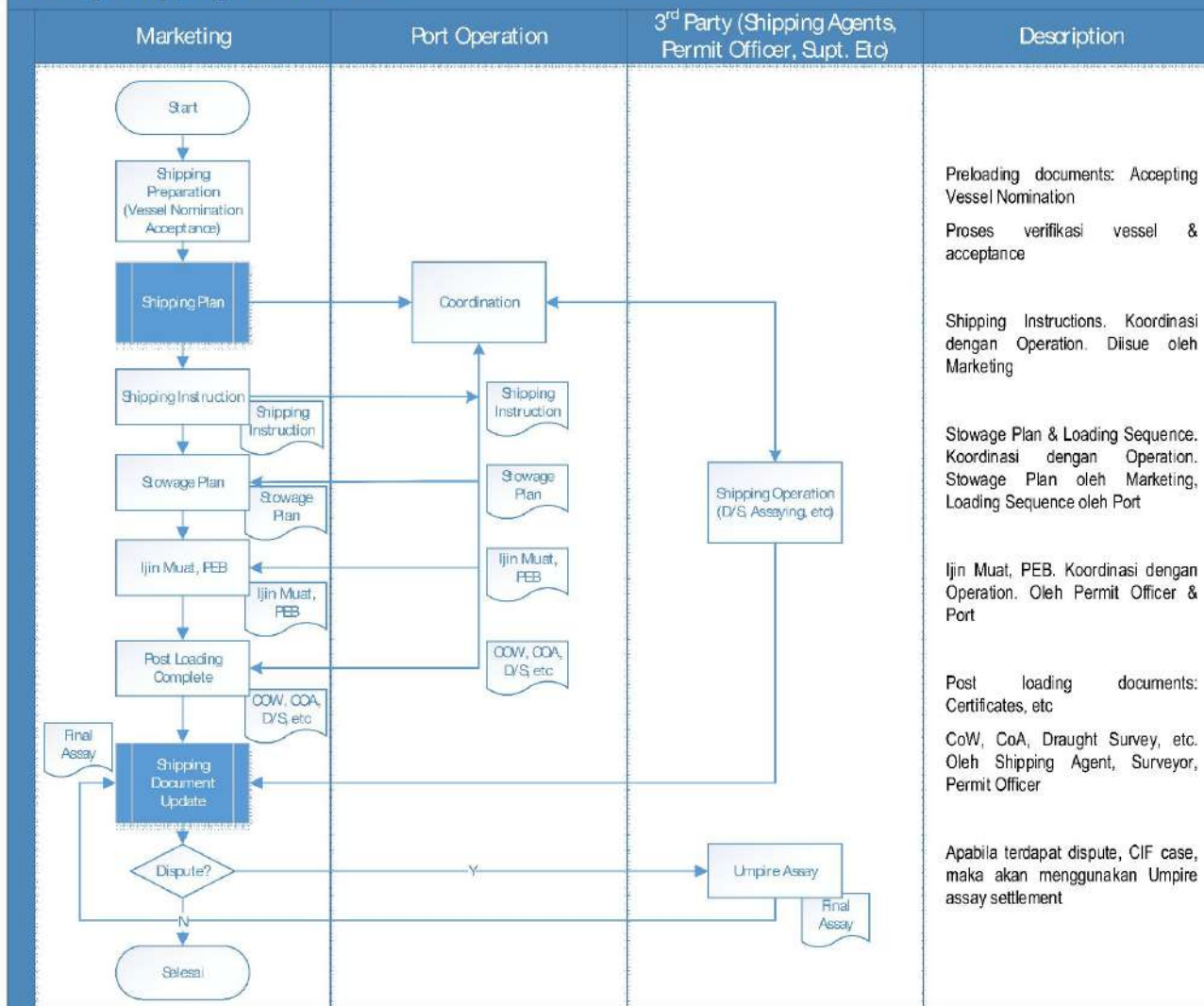
SPEC...	Sourc...	Sampl...	IKH Pit	Note	Volume	TM	IM	AC	VM	FC	TS	CV (a...	CV (ar)
Q	(X)	(X)	(X)	Q	Q	Q	Q	Q	Q	Q	Q	Q	Q
			IKH-CM-...		27,750	37.286	21.203	5.672	39.846	34.368	0.650	4,962	3,950
	PORT S...				1,750	0.000	0.000	3,921.701	0.000	0.000	0.725	0	6
	CPP KM...				2,000	0.000	0.000	0.000	0.000	0.000	0.000	0	0

"Forecasted Stock as Source Blend Plan"



Shipment Plan to Operation

Manage Shipping Plan/Schedule



Production & Logistics / Port / Barging / Loading Wednesday, September 7, 2022

From: 01 Sep 2022 00:00 To: 30 Sep 2022 00:00 OK

Loading Actions

Drag a column header here to group by that column

Transac...	Despatch...	Sales Co...	Buyer	Source L...	Barge	Transport	Draft Sur...	Unit	Commens...	Comple...
* BGL-202209...	DO-202207...	07/IC-PLN/I...	PERUSAHA...	1SA Kallora...	BG FITRIA 3...	BG FITRIA 3...	10,000.000	MT	2022-09-06 ...	2022-09-06 ...
* BGL-202209...	DO-202207...	22/13/IDC...	Anaga Abyu...	1SA Kallora...	BG. JINGXI 06	BG. JINGXI 06	7,500.000	MT	2022-09-06 ...	2022-09-06 ...
* BGL-202209...	DO-202207...	22-01/IDC...	TRAFIGURA	1SA Kallora...	BG. JINGXI 06	MV. W-ORI...	7,200.000	MT	2022-09-06 ...	2022-09-06 ...

Shipment Loading

Certificate of Weight

Drag a column header here to group by that column

Survey Number	Survey Date	Bill of Lading No.	Bill of Lading N...	Surveyor	Product	Quantity	Unit	Dispatch Order	Transport	Customer	Update Number
08165/CO06AF	6/23/2022	6/13/2022	BU	50,000	MT	DO-20220724-015			Update Number

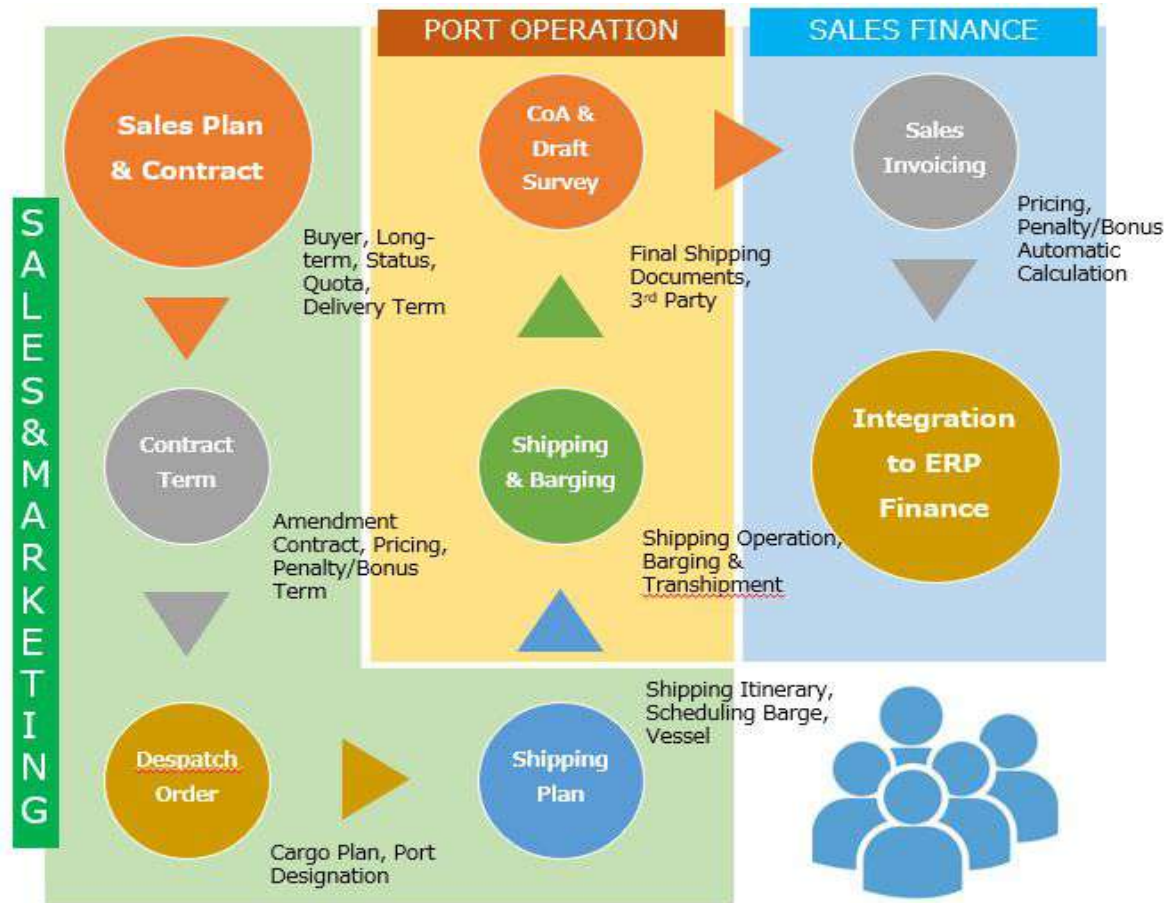
COW Details Documents

Drag a column header here to group by that column

Survey Number	Survey Date	Bill of Lading Date	Bill of Lading Number	Surveyor	Product	Quantity	Unit
224	6/1/2022	6/1/2022	2455		...	27,000.000	MT
23	7/10/2022	7/10/2022	23		VARINDA	23,000.000	INDEX

Shipping Documents (COW, COA, BAST, etc)

“sales & marketing operation”



SMCS Sales Marketing

Modelling

- ✓ Operation Area
- ✓ Stockpiles
- ✓ Port Location
- ✓ Flow Process

Planning

- ✓ Sales Plan
- ✓ Shipment Plan

Quality & Material

- ✓ Material
- ✓ Product Spec
- ✓ Analyte & Template
- ✓ Certificate of Analysis

Stockpile

- ✓ Incoming Outgoing
- ✓ Stock Survey
- ✓ Stockpile State

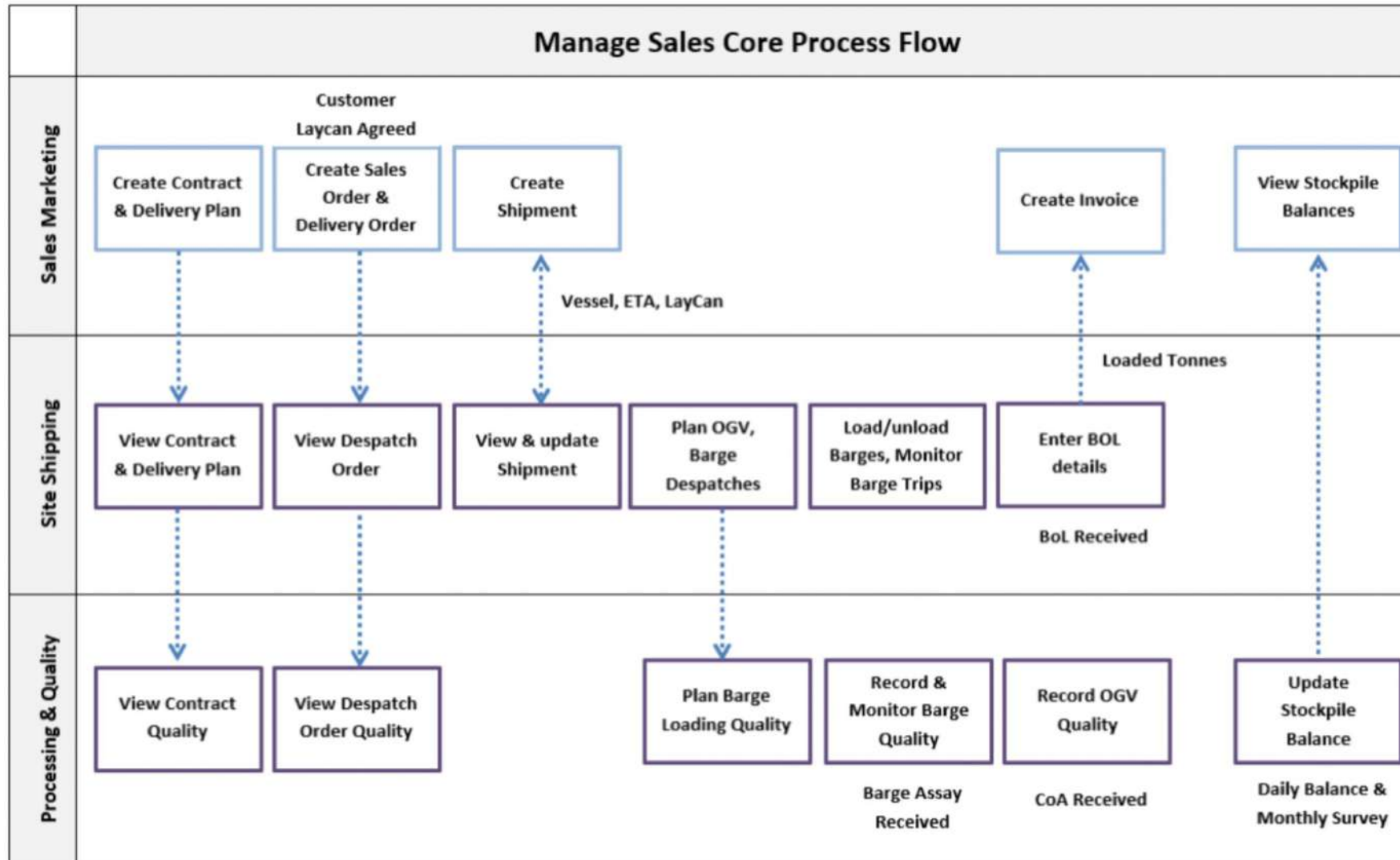
Sales

- ✓ Barging
- ✓ Shipment
- ✓ Shipping Documents
- ✓ Despatch Demurrage

Contract

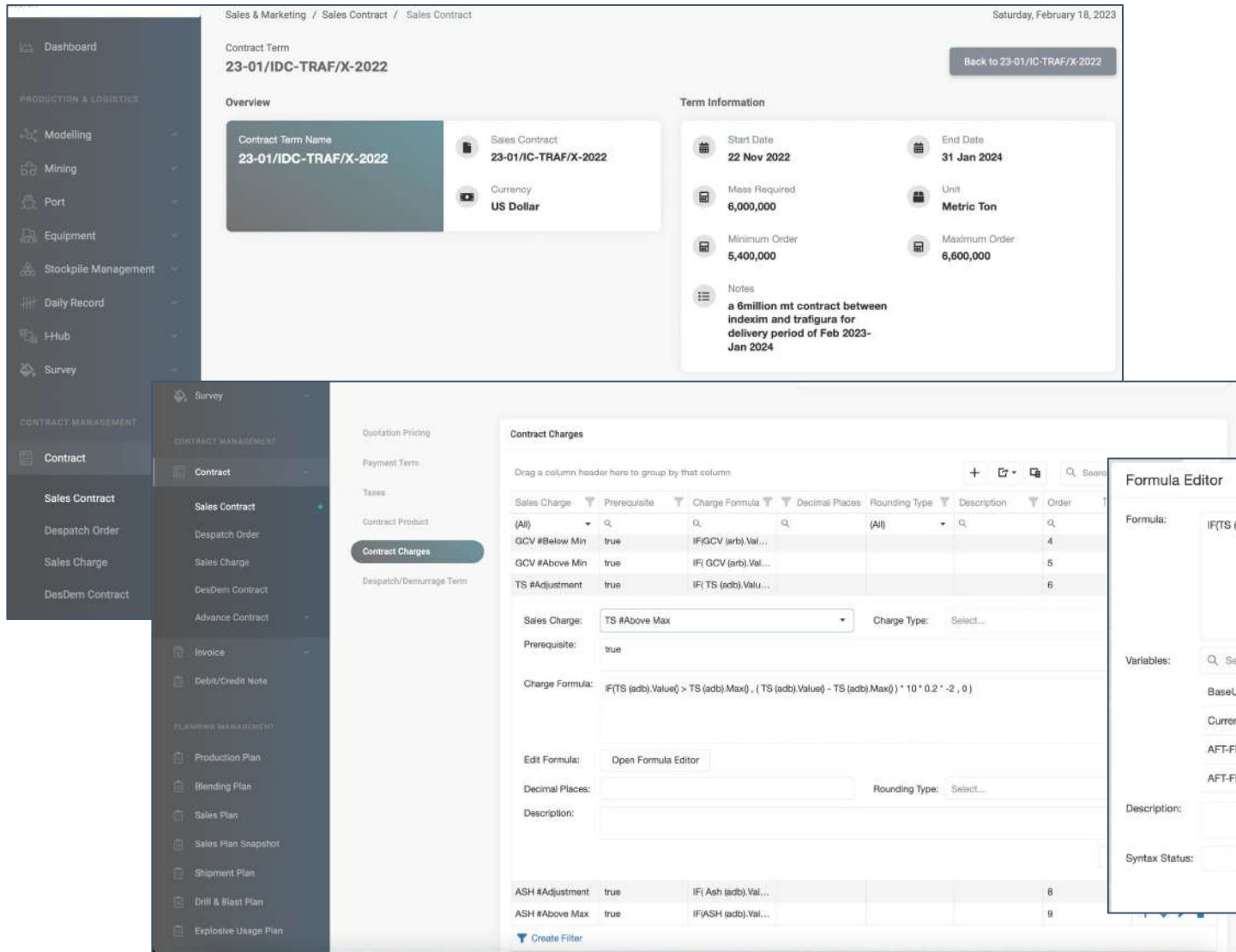
- ✓ Advanced Contract
- ✓ Complex Formulation
- ✓ Sales Contract

Improve Visibility & Coordination Process



- Organized Contract, from master to amendment & historical changes
- Validated Source of Initial Information & Shipping Instruction
- Sales, Port, Quality, & Finance integrated operation process
- Backward Audit-Trail from Sales invoice to Contract for Auditor

Manage Sales Contract



Sales & Marketing / Sales Contract / Sales Contract

Contract Term
23-01/IDC-TRAF/X-2022

Overview

Contract Term Name
23-01/IDC-TRAF/X-2022

Sales Contract
23-01/IC-TRAF/X-2022

Currency
US Dollar

Term Information

Start Date
22 Nov 2022

End Date
31 Jan 2024

Mass Required
6,000,000

Unit
Metric Ton

Minimum Order
5,400,000

Maximum Order
6,600,000

Notes
a 6million mt contract between
indexim and trafugra for
delivery period of Feb 2023-
Jan 2024

Contract Charges

Sales Charge	Prerequisite	Charge Formula	Decimal Places	Rounding Type	Description	Order
(All)				(All)		
GCV #Below Min	true	IF(GCV (arb).Val...				4
GCV #Above Min	true	IF(GCV (arb).Val...				5
TS #Adjustment	true	IF(TS (adb).Valu...				6

Formula Editor

Formula: $IF(TS (adb).Value > TS (adb).Max() , (TS (adb).Value - TS (adb).Max()) * 10 * 0.2 * -2 , 0)$

Variables: BaseUnitPrice(), CurrentInvoiceUnitPrice(), AFT-Flow (Oxidizing).Value(), AFT-Flow (Oxidizing).Target()

Function: AVG(), IF()

Operators: +, -, *, /

Description:

Syntax Status: Check Syntax

Save

- Sales Contract Attributes
- Contract Terms (Quota, Product, Specification)
- Quotation Pricing
- Payment Term
- Tax/Royalty
- Contract Charges
- Despatch/Demurrage Term

Shipment Plan to Shipping Instruction

"Shipping Instruction to 3rd Party Logistics & Internal Divisions (Port, Quality, & Finance)"

SmartMining

Search

Dashboard

PRODUCTION & LOGISTICS

Modelling

Mining

Port

Equipment

Stockpile Management

Daily Record

I-Hub

Survey

CONTRACT MANAGEMENT

Contract

Sales Contract

Despatch Order

Search for anything

Contract Managem... / Sales Contract / Shipping Instru...

Saturday, February 18, 2023

Shipping Instruction

Actions

Drag a column header here to group by that column

Transaction...	SI Date	Despatch Order	SI Number	Buyer	Created By	Print
[auto generate]		(All)		(All)		
SI-20220812-0026	7/23/2022	DO-20220810-010	269/IC-SI/VII/2022	PT. SHENHUA G...	Ahmad Fauzi Ram...	Print

To Company

Analytes

Detail Survey

Detail Survey Document

Tug Boat

Insurance

Shipping Agent Task

Shipping Agent Document

Stevedoring

Drag a column header here to group by that column

SI Type	To Company
(All)	(All)
Superintending	ASIATRUST TECHNOVIMA QUALITI, PT
PBM	BORNEO PERSADA UTAMA PT
Shipping Agent	BAHARI EKA NUSANTARA (BENLINE), PT

Create Filter

10 20 50 100

Page 1 of 1 (3 items)

SHIPPING INSTRUCTION

269/IC-SI/VII/2022

Ref. Despatch Order No.:

DO-20220810-010

Ref. Work Order No :

00004547

1.To Company

BORNEO PERSADA UTAMA PT

2.Shipper

INDEXIM COALINDO, PT
GEDUNG SAHID SUDIRMAN CENTER LT. 31
JL JEND. SUDIRMAN KAV.86 RT. 010 RW. 011
INDONESIA

3.Consignee

PT. SHENHUA GUOHUA PEMBANGKITAN JAWA BALI

4.Notify Party

PT. SHENHUA GUOHUA PEMBANGKITAN JAWA BALI

5. Notify Party Address

6.Vessel Information

Vessel's Nomination

Vessel's Type

GEARED VESSEL

E.T.A

Sunday, July 24, 2022

Flag/IMO Number

INDONESIA / 9266097

DWT/NT/GT

53,553 MT / 29,980 MT / 18,486 MT

Master/Voy.No

CAPT. DJONI SOEDARSONO / V 09/KR/L/2022

Cargo Description

INDONESIAN STEAM COAL IN BULK

Quantity (MT)

0 (± 10%)

7.Port Information

Port of Loading

KALIORANG ANCHORAGE, EAST KALIMANTAN, INDONESIA

Port of Discharge

JETTY PLTU JAWA 7

8. Marked

9. Place Issued

-

10. Date Issued

Saturday, July 23, 2022

Lampiran:

Created by

Approved by

Date: Saturday, July 23,

Sales Invoicing

Sales Invoice

Overview

Invoice Number: 237/IC-INV/VII/2022

Sales Type: Domestic General

Invoice Type: Commercial

Invoice Date: 1 Jul 2022

Dispatch Order: DO-20220728-014

Invoice Information

Contract: 22/2022

Contract Product: 22/2022

Quantity: 9,850.042

Unit Price: 84.27

Total Price: 777,365.31

Unit: Metric Ton

History

Created By: [Name]

Edited By: [Name]

Approved By: [Name]

Unapproved By: [Name]

Billing

Call: [Number]

Bank Account: [Number]

Buyer: [Name]

Bill To: [Name]

U/C Number: [Number]

U/C Specification: [Number]

U/C Date Issue: [Date]

U/C Issuing Bank: [Name]

Product Specification

Attachments

Price Index

Drag a column header here to group by that column

Analyze Definition: [List]

(All)

IM (adb)

Ash (adb)

TM (arb)

Size

Select a template

Report template ...

SALES06 - DOWN PAYMENT DOMESTIC

SALES01 - COMMERCIAL INVOICE EXPORT

SALES07 - PELUNASAN COMM INVOICE DOMESTIC

SALES08 - COMMERCIAL INVOICE MULTI BARGES

PROFORMA INVOICE

No: 2541 - INV/VII/2022

Date: August 03, 2022

Lesson: 7/20/2022 - 8/2/2022

The Name Of Vessel: [Name]

Bill of Lading Number: [Number]

Bill of Lading Date: [Date]

From: [Name]

To: [Name]

Payment: [Name]

Letter of Credit Number: [Number]

Date of Issue U/C: [Date]

Issue By U/C: [Name]

Contract Number: [Number]

DESCRIPTION OF GOODS

QUANTITY	SAID PRICE	USD \$1.35 PER MT FOR GENERAL	TOTAL AMOUNT
LOADED			
VEHICLE WITH BARGE CALDERIC VALU 5 BARGE			
GAP FOR MY VALORANG ANCHORAGE, EAST			
BALUBANTAN, INDONESIA INCLUDING ALL EXPORT			
DUTIES AT THE LOADING PORT			
COMMODITY - INDONESIA STEAM	73,000 MT	USD	USD

CHANGE RATE:

Amount to be Paid: USD \$

Invoice Amount: USD \$

Value Add Tax: USD \$

Total Invoice Value: USD \$

No million seven hundred and fifty thousand seven hundred and twenty dollars and 00 cents

PT INDEMI COALINDO

BRELIANTO AGIRADIADI
MANAGER

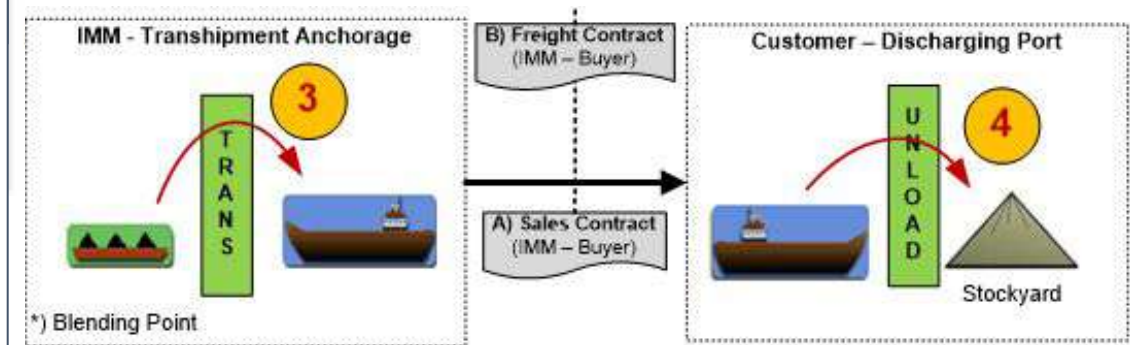
Secure invoicing process

- Automatic invoice calculations from contract / marketing data
- Security / segregation of duties
- Audit trail
- Invoicing workflow

Multiple invoices

- Provisional / Final / Credit / Debit Notes
- Accruals

Integrated to accounting



Despatch Demurrage

Contract Term
23-01/IDC-TRAF/X-2022

Overview

Contract Term Name
23-01/IDC-TRAF/X-2022

Sales Contract
23-01/IC-TRAF/X-2022

Currency
US Dollar

Term Information

Start Date
22 Nov 2022

End Date
31 Jan 2024

Mass Required
6,000,000

Unit
Metric Ton

Minimum Order
5,400,000

Maximum Order
6,600,000

Notes
a 5million mt contract between indoxim and trafigura for delivery period of Feb 2023-Jan 2024

Despatch/Demurrage

Location: Kutai, Kalimantan, Indonesia

Loading Rate Geared (mt/day): 10,000

Loading Rate Gearless (mt/day): 15,000

Turn Time (Hour): 12

Rate:

Currency: USD

Despatch (%): 50

Save

Search for anything

Port / Despatch-Demurrage / Statement of Fact

Statement of Fact

Drag a column header here to group by that column

Start Date	End Date	Code
2022-08-03 02:00:00	2022-08-03 03:00:00	CPL
2022-08-03 01:00:00	2022-08-03 02:00:00	IDS
2022-07-31 07:00:00	2022-08-03 01:00:00	CNL
2022-08-03 11:00:00	2022-08-03 12:30:00	LCN
2022-07-31 04:50:00	2022-07-31 07:00:00	HPN
2022-07-26 16:30:00	2022-07-26 17:30:00	IND
2022-07-25 18:30:00	2022-07-26 16:30:00	LCM
2022-07-26 17:30:00	2022-07-31 04:50:00	CML

- Demurrage caused by Port Owner
 - ◆ Buyer will pay demurrage cost to Vessel Owner/Charter Party, Buyer
- DesDem caused by 3P Transhipment Point (FTS)
 - ◆ DesDem Contract with 3P Transhipment
 - ◆ DesDem, Sales Contract with Buyer

LAYTIME CALCULATION

No: 002/LTC-IC/440/01/2023
Date: January 15, 2023

Alamat : Sahid Sudirman Center Lantai 31
Jl. Jendral Sudirman No. 86
Jakarta 10220, Indonesia
P : (+6221) 50807177 F : (+6221) 50807107

DESPATCH / DEMURRAGE RATE:
(Ref : DO-20230102-302 / WO-00008948 from marketing)

Description	Unit	Rate Unit	Amount
Despatch	Per Day	USD/Day	6,000
Demurrage	Per Day	USD/Day	12,000

Party / Buyer : TRAFIGURA ASIA TRADING PTE
Name of Ship : MV. EGE S
B/L Date : January 09, 2023
Loading Port : KALIORANG ANCHORAGE, EAST KALIMANTAN, INDONESIA
Discharging Port : ANY PORT(S) IN INDIA

Laycan : 1/1/2023 - 1/10/2023

Description	Unit	Total	Remarks
Cargo Qty	MT	56,608	
Loading Rate	MT/Day	10,000	
Time Allowed	5 Days 15 Hours 51 Minutes		

LOADING ACTIVITY :

Description	Date
N.O.R TENDERED	Thursday, 05 January 2023 09:20
N.O.R ACCEPTED	-
LAYTIME COMMENCED	-
COMMENCED LOADING	Thursday, 05 January 2023 12:10
COMPLETED LOADING	Monday, 09 January 2023 14:40

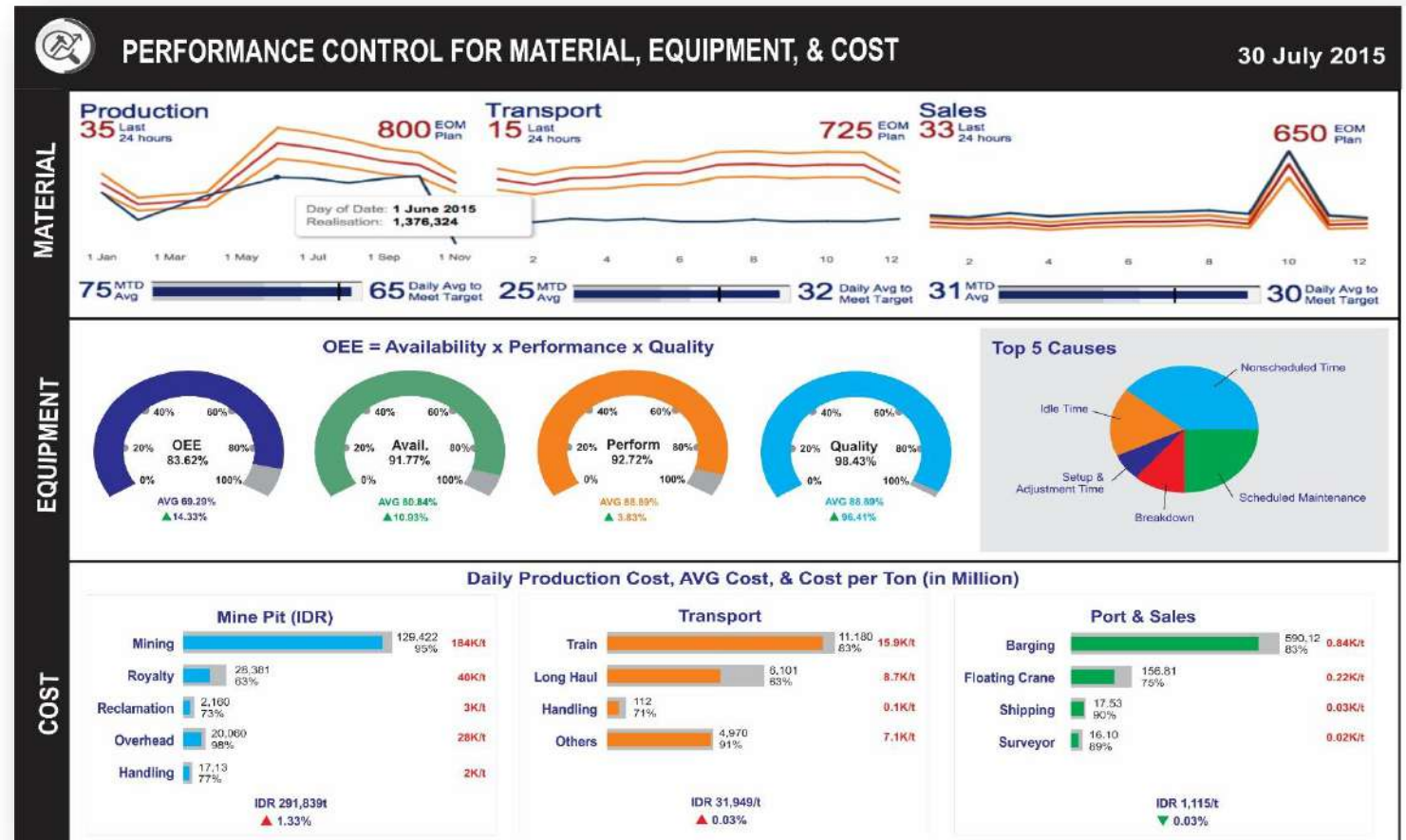
LAYTIME CALCULATION DESPATCH /

Description	D - H - M
Laytime Allowed	5 Days 15 Hours 51 Minutes
Laytime Used	3 Days 15 Hours
Time Save	2 Days 51 Minutes
Total Despatch	USD.12,214.80

Start	End	Percentage	D-H-M	Laytime Used	Remark
01/05/23 09:20	01/05/23 12:10	0	0:0:0	0.000000	Turning Time
01/05/23 12:10	01/06/23 00:00	100	0:11:50	0.493056	Commenced Loading
01/06/23 00:00	01/06/23 15:25	100	0:15:25	0.642361	Continued Loading
01/06/23 15:25	01/06/23 18:30	0	0:0:0	0.000000	Heavy Rain
01/06/23 18:30	01/07/23 00:00	100	0:5:30	0.229167	Continued Loading
01/07/23 00:00	01/07/23 00:20	100	0:0:20	0.013889	Continued Loading
01/07/23 00:20	01/07/23 05:45	0	0:0:0	0.000000	Heavy Rain
01/07/23 05:45	01/08/23 00:00	100	0:18:15	0.760417	Continued Loading
01/08/23 00:00	01/08/23 06:30	100	0:6:30	0.270833	Continued Loading
01/08/23 06:30	01/08/23 08:30	0	0:0:0	0.000000	Heavy Rain
01/08/23 08:30	01/09/23 00:00	100	0:15:30	0.645833	Continued Loading
01/09/23 00:00	01/09/23 10:40	100	0:10:40	0.444444	Continued Loading
01/09/23 10:40	01/09/23 11:40	0	0:0:0	0.000000	Intermediate Draft Survey
01/09/23 11:40	01/09/23 14:40	100	0:3:0	0.125000	Completed Loading

Prepared By	Checked By	Approve By	Catatan

Producing Managerial Dashboard from material & equipment with cost control in day to day basis



- The ability to understand the performance of production against equipment & cost.
- The ability to review past performance with specific date or today's performance.
- Detailed analysis the cause of high or low production with clear information from equipment aspect.

Edit Master text styles

- 1 About Us**
PT. Adiraja Integrasi
- 2 Selected Portfolios**
Supply Chain Management
- 3 SMCS Smart Mining**
Functionalities coverage
-  **4 SMCS Command Centre**
Dashboard Function
- 5 Study Case**
Challenges & Goal

SMCS Command Center

Dashboard Function

SMCS Command Centre Dashboards



*Prepared for Adiraja Prospect/Client.
For internal use only and not to be distributed.*

Corporate

Asset &
Work
Management

Operation
Management

Control
System

Devices



Production & Sales
Monitoring

Fleet Management
Monitoring

Stock Live
Monitoring

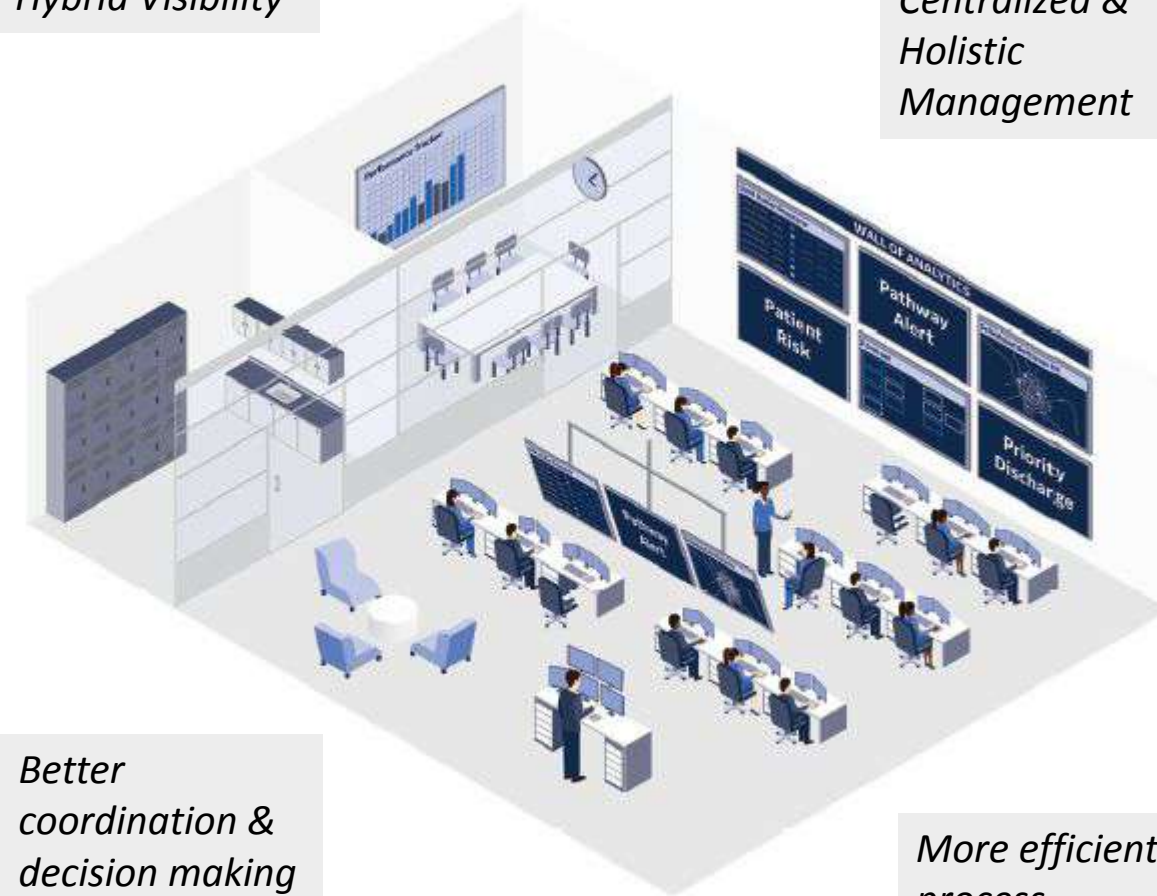
Long Hauling
Monitoring

Shipment
Monitoring

SMCS Command Centre Layout

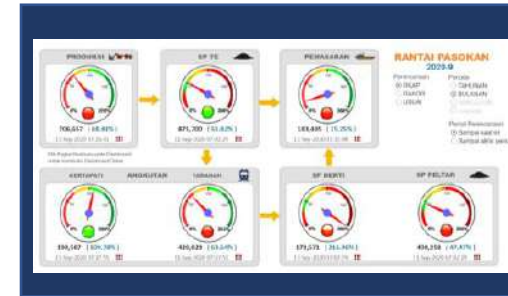
End-to-end
Hybrid Visibility

Centralized &
Holistic
Management

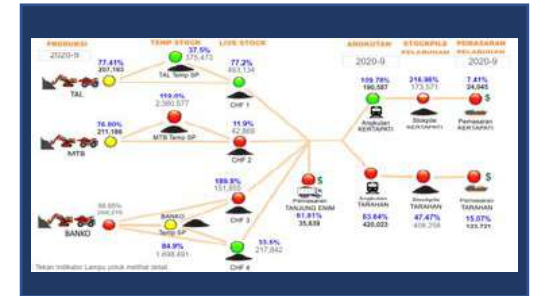


Better
coordination &
decision making

More efficient
process



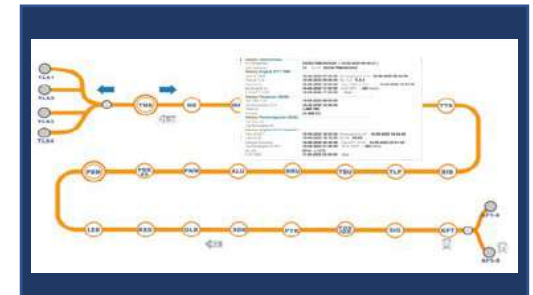
Live Production & Sales
Monitoring



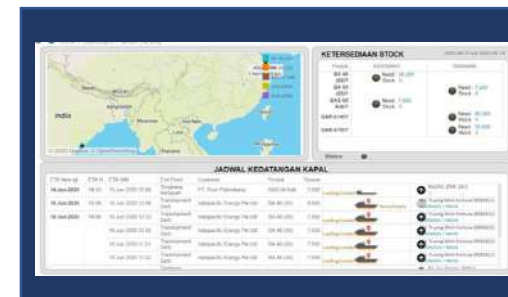
Fleet Management Monitoring



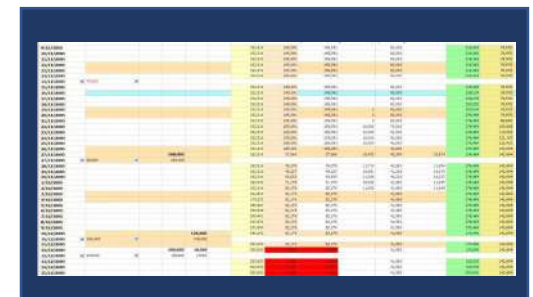
Stock Live Monitoring



Long-Hauling Monitoring

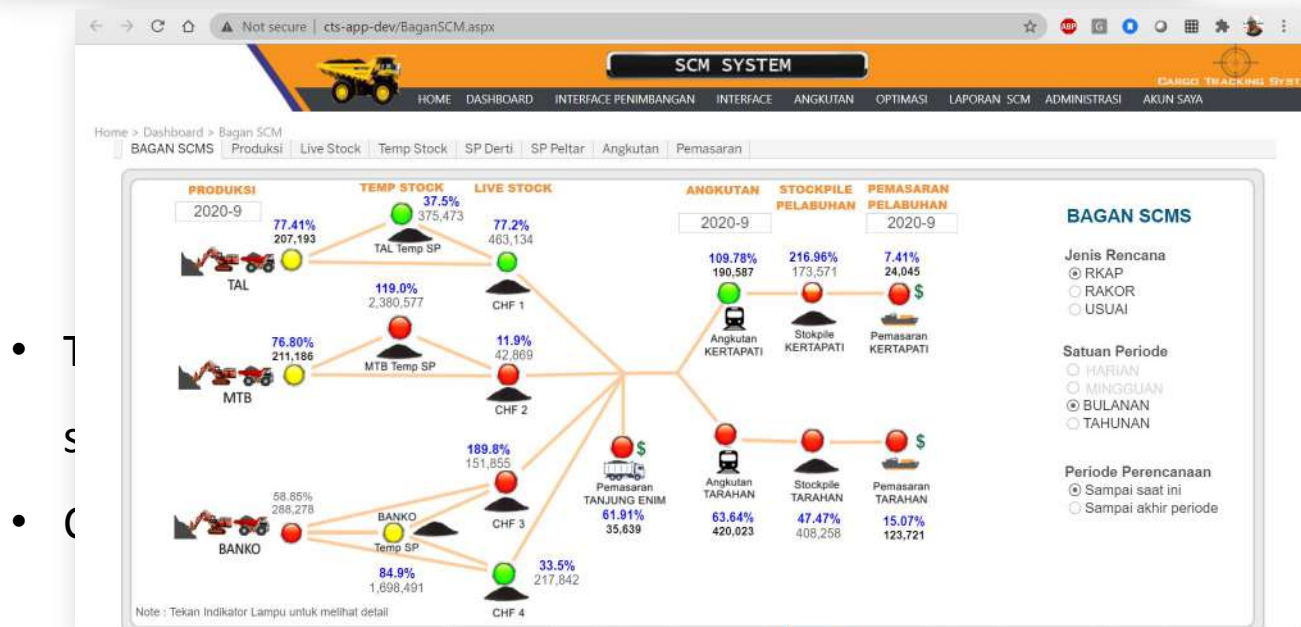
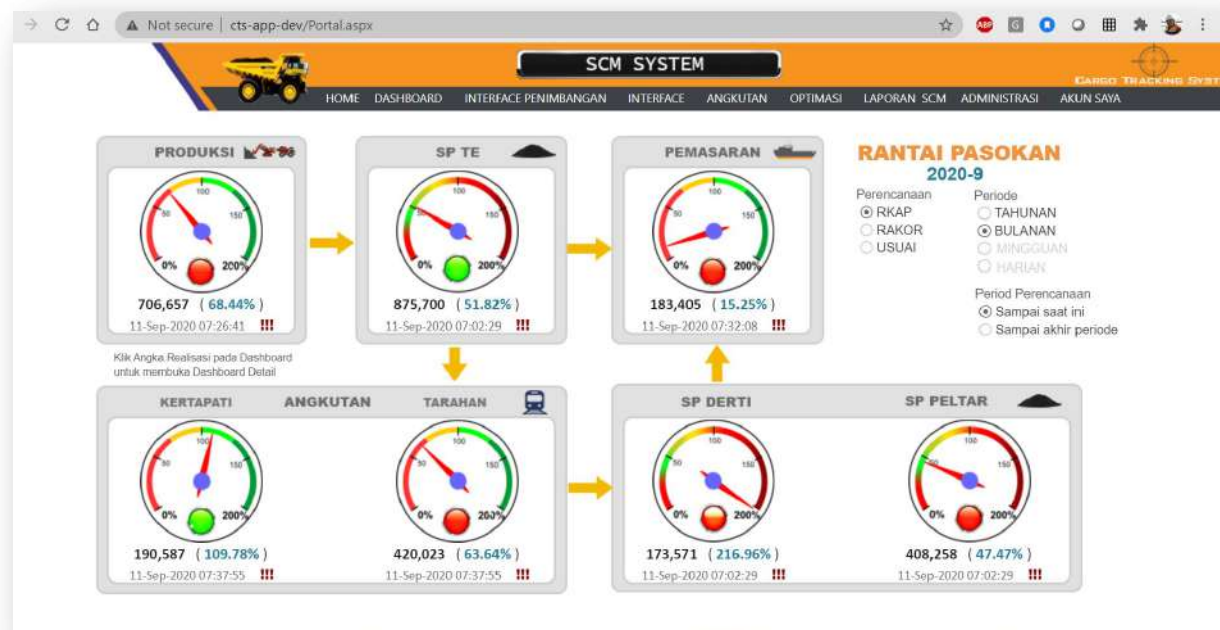


Shipment Monitoring

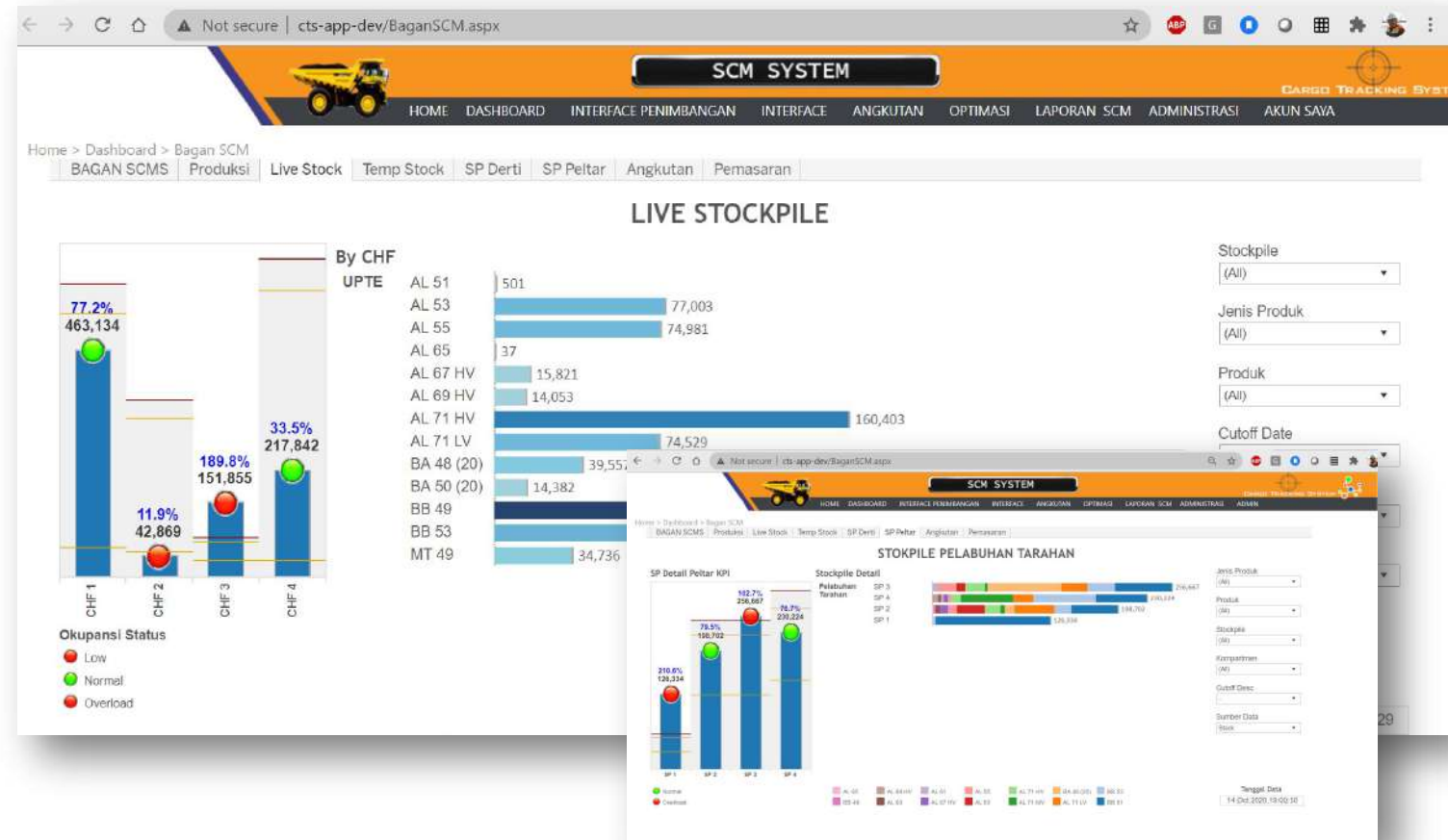


Production & Sales Plan
Scheduling

High-level end to end real-time operation monitoring

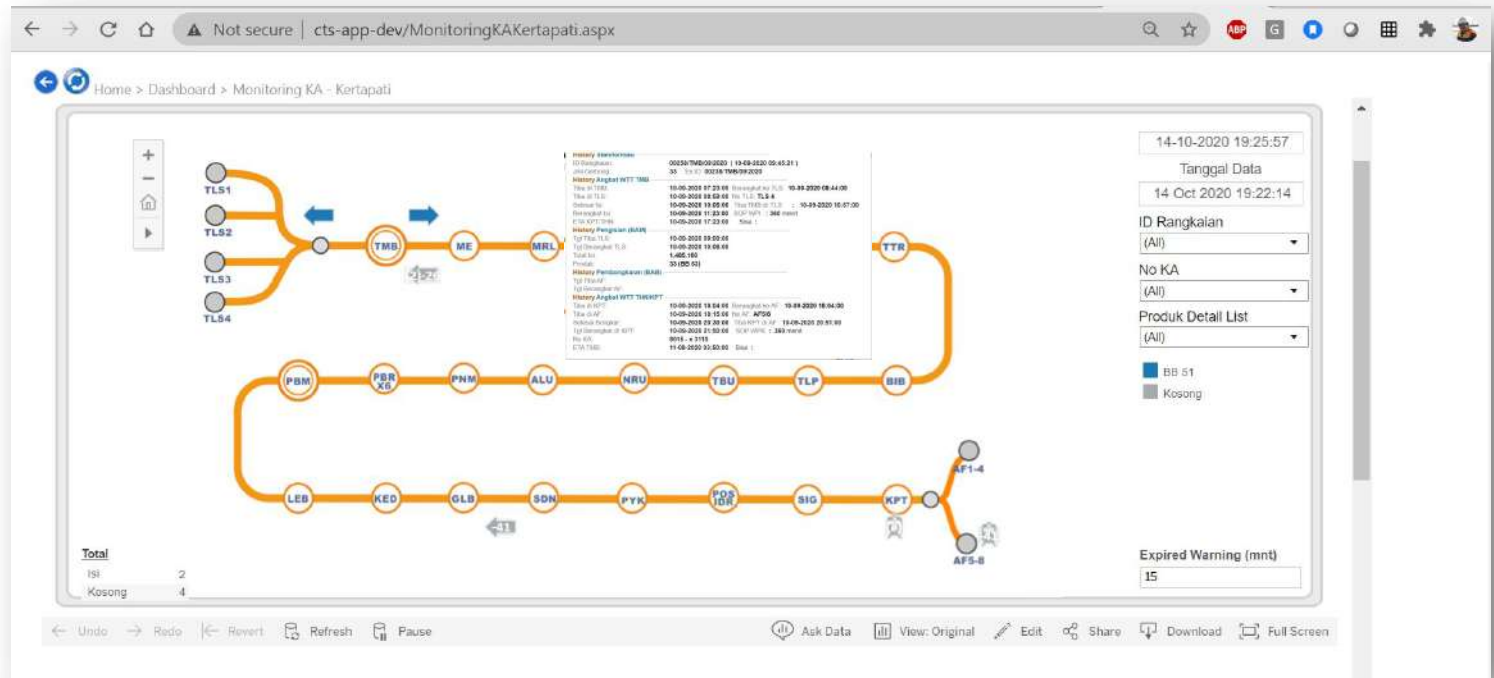


Live stockpile real-time operation monitoring



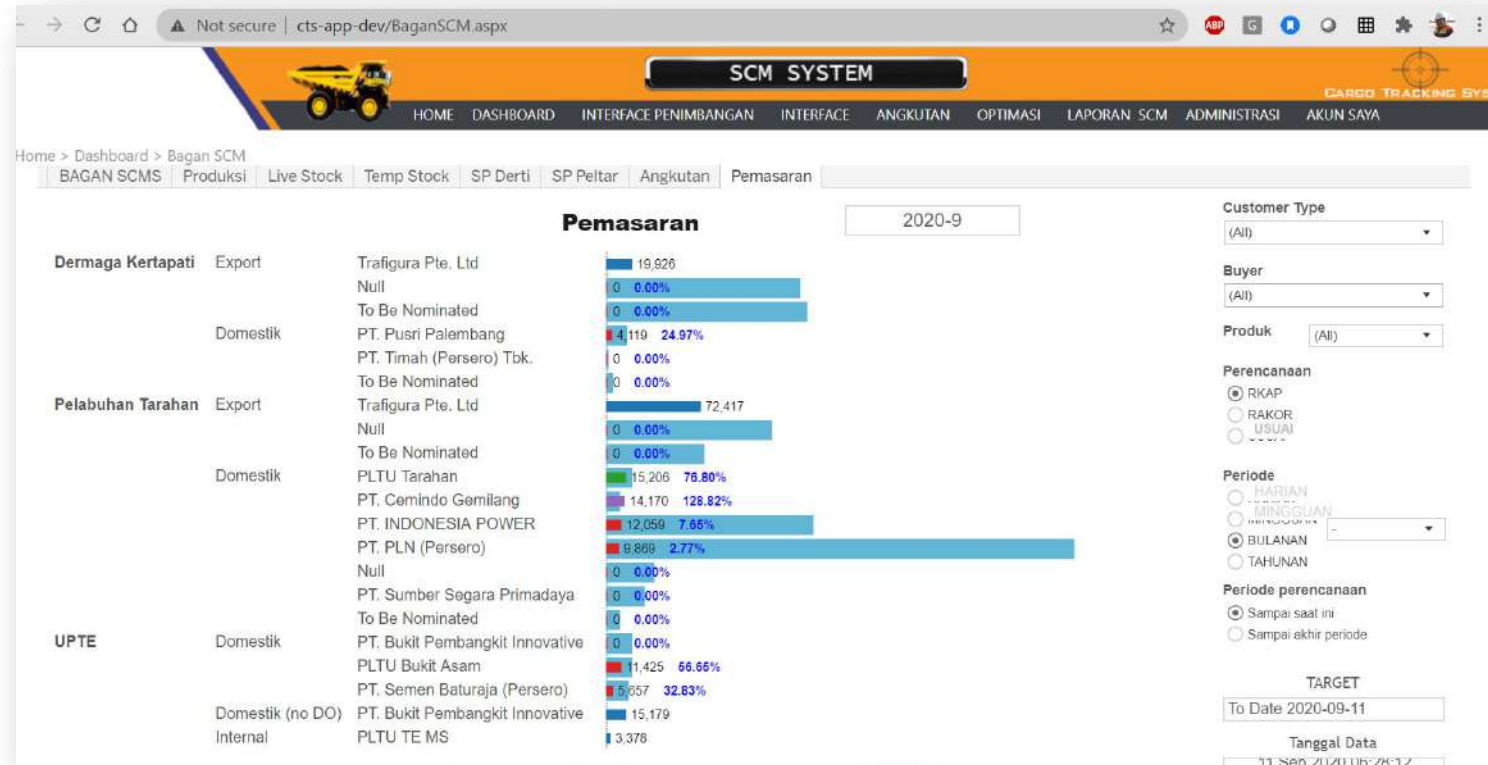
- The ability to visualize actual stockpile amount with occupancy status from every location.
- Detailed grade/product quality type information per stockpiles.

Long hauling real-time operation monitoring



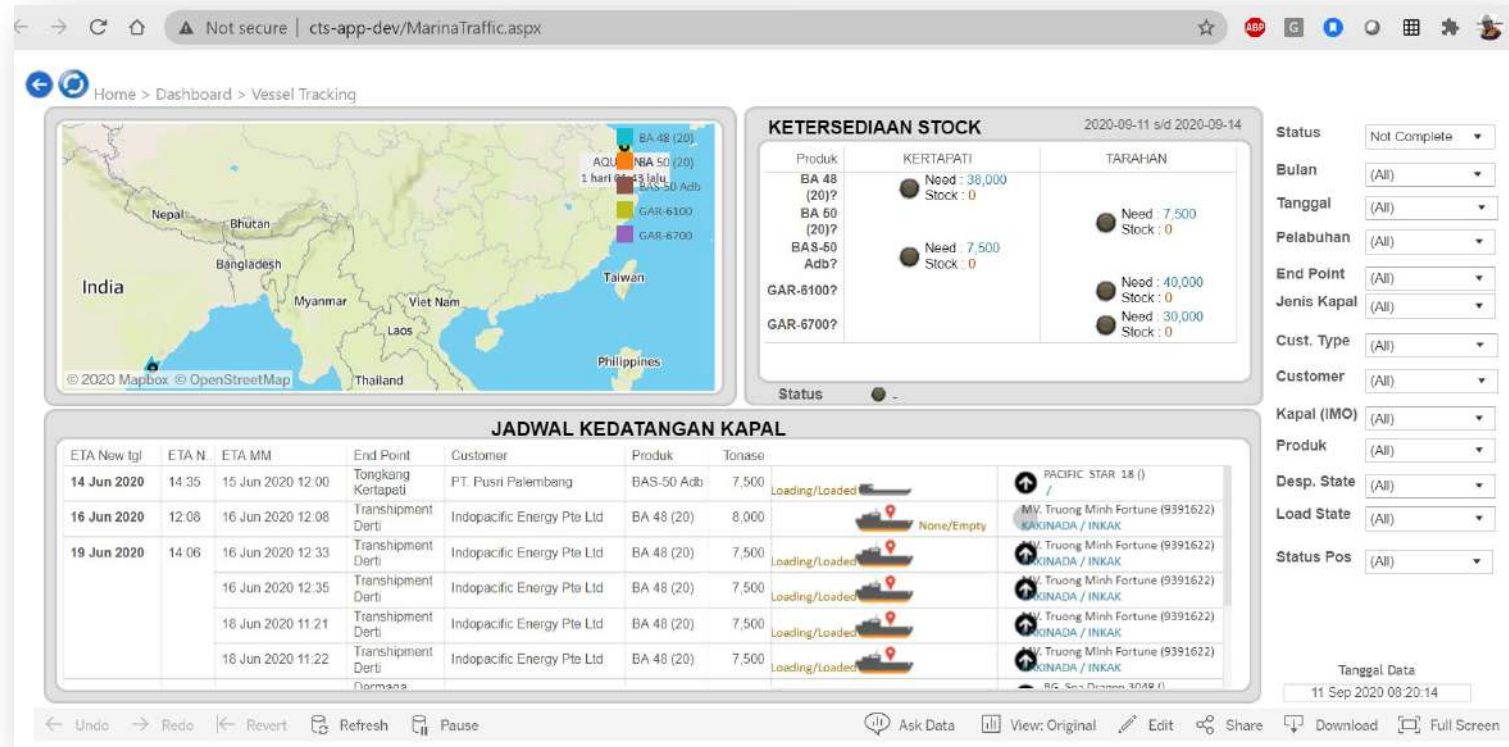
- The ability to visualize real-time position & status of a long hauling transport between route-point.
- Detailed transportation schedule with historical information to help monitoring performance.

Sales summary from actual delivery against contract monitoring



- The ability to see the whole sales progress against contract delivery target per buyer.

Port management to monitor and arrange shipping line-up with real-time view



- The ability to see the entire vessel position, status, and detailed information such as capacity size & designated product.
- The provided vessel information can be used to analyze the stock availability to be managed for quick decision making on scheduled coal transport supply.

Edit Master text styles

- 1 About Us**
PT. Adiraja Integrasi
- 2 Selected Portfolios**
Supply Chain Management
- 3 SMCS Smart Mining**
Functionalities coverage
- 4 SMCS Command Centre**
Dashboard Function
-  **5 Study Case**
Challenges & Goal

Study Case

Real solutions. Real results.

Study Case – Indexim Coalindo & KMIA

Jakarta, Kaliorang, & Samarinda Site



- Difficulties in managing the supply chain
 - Lack of visibility across the value chain
 - Unaccountable losses
 - Delay in reporting
- Misaligned production and marketing objectives
 - Produce at lower cost – maximize revenue stream
 - Ability to capitalize in spot sales
 - Blend down to requirement specifications

GOAL = Process Efficiency, Cost Control, & Better Decision Making

- Lack of standardized processes
 - Multiple and conflicting versions of data
 - Discrepancies across different business units
 - Regulatory compliant issues
- Non value-added activities
 - End-of-month rush
 - Duplicate/multiple data entries
 - Delay in generating invoices -> financial loss



Visit & Contact us

www.adiraja-integrasi.com

+62 811 1789 333

